



25 & 25A Burrell Crescent Baulkham Hills NSW

6 3 3

Outstanding opportunity to secure this remarkable property in the heart of Baulkham Hills, situated on a generous 720sqm corner block with a wide 19.4m frontage. This versatile home offers an exceptional opportunity for dual-income or in-law accommodation.

Type : House
Price : Just Listed
Land Size : 720 sqm
View : <https://www.gilmour.com.au/sale/nsw/hills/baulkham-hills/residential/house/8207077>

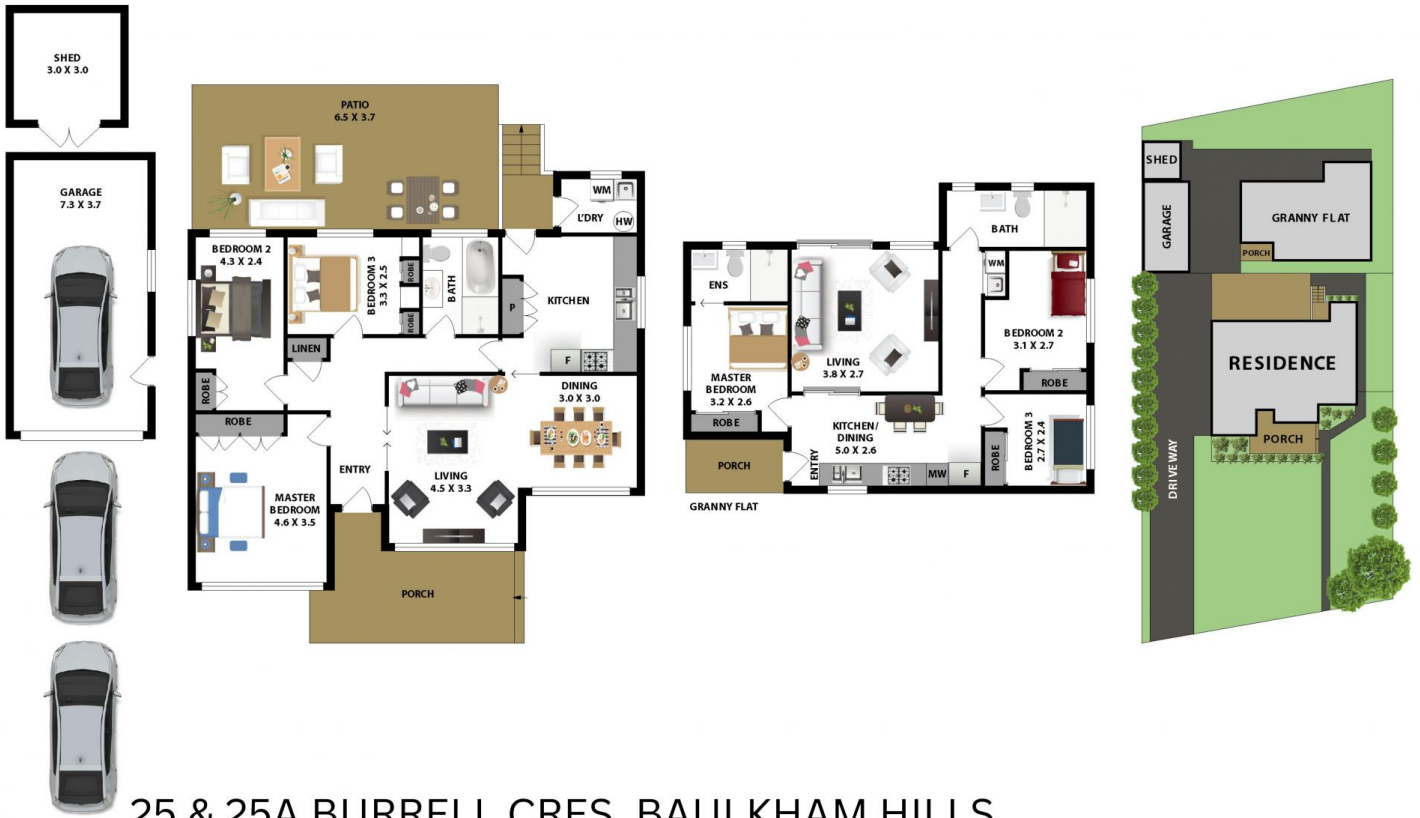
Home 1

- ? 3 spacious bedrooms, all with wardrobes
- ? L-shape lounge & dining room
- ? Modern kitchen with stainless steel appliances & gas cooking
- ? Good size bathroom with separate bathtub & shower
- ? Split System air conditioning for year-round comfort
- ? Modern floorboards throughout & plenty of natural light
- ? Paved low maintenance rear entertainment area

[For full version visit the website](#)



Noah Khanjani
02 9899 3311



25 & 25A BURRELL CRES, BAULKHAM HILLS

DISCLAIMER:

All information contained herein is gathered from sources we consider reliable. However, we cannot guarantee or give away any warranty to the information provided.

