



5/7 Harrington Avenue Castle Hill NSW

3 2 2

Located in a lovely low rise 3 storey complex that is secure and private, this property is just 2.2km to the Showground Metro Train Station less than 1km to William Clarke College, 700m to the Kellyville Village shops, and only 400m to St Angela's Primary School. It also falls within the Sherwood Ridge Public School catchment.

Type : Apartment
Price : \$ 980,000
Land Size : 345 sqm
View : <https://www.gilmour.com.au/sale/nsw/hills/castle-hill/residential/apartment/8133823>

This sensational ground floor unit boasts a sunny northerly aspect to the back yard and is easy to maintain!

There are 3 big bedrooms here, all with built-in wardrobes and the Master has an ensuite.

Generous open plan living space includes a lounge relaxing & a dining area and the 9 foot ceilings gives a

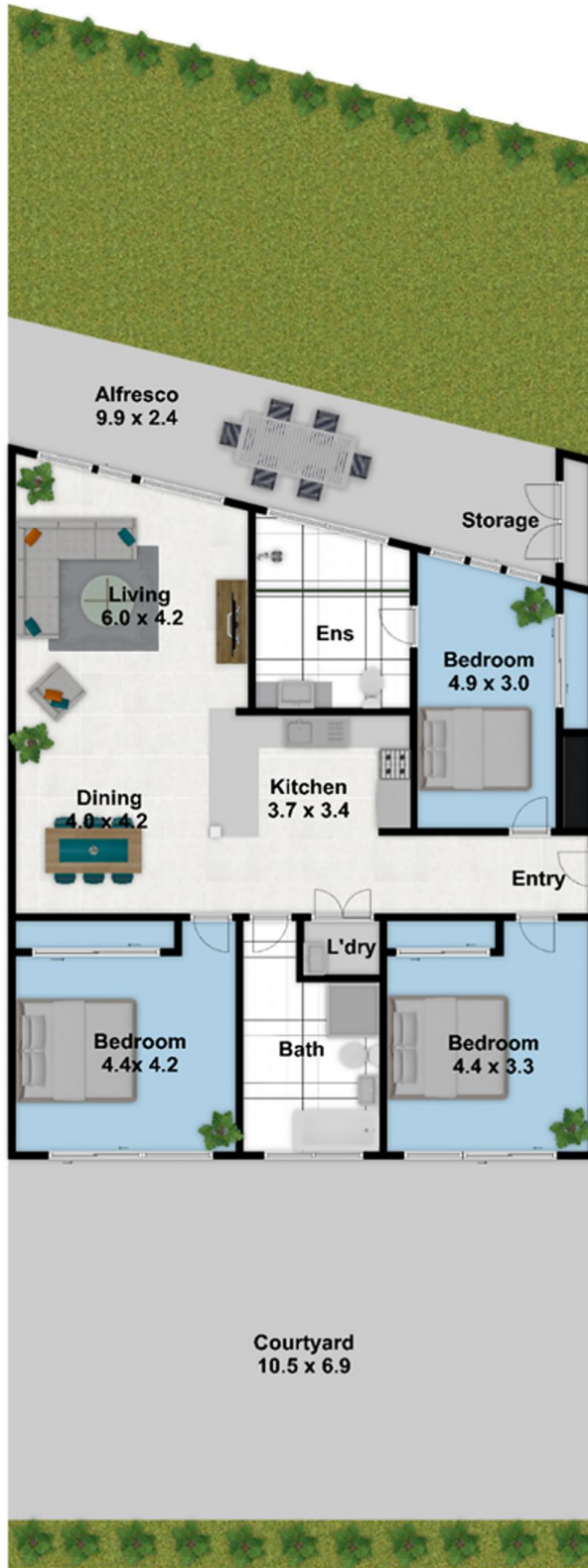


Craig Alexis
02 9899 3311

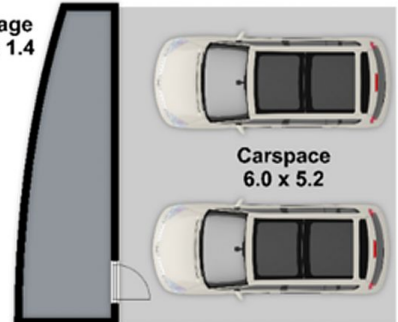
[For full version visit the website](https://www.gilmour.com.au)

5-7 Harrington Ave Castle Hill

Please note:
Floorplan measurements are a guide only.
All dimensions are approximate in their distance and volume.



Storage
6.0 x 1.4



-  3
-  2
-  2