



10 Hambleton Avenue Baulkham Hills NSW

4  2  2 

This exquisite family home has style and quality which offers a choice of spaces for family lifestyle and versatility with modern fresh tones throughout.

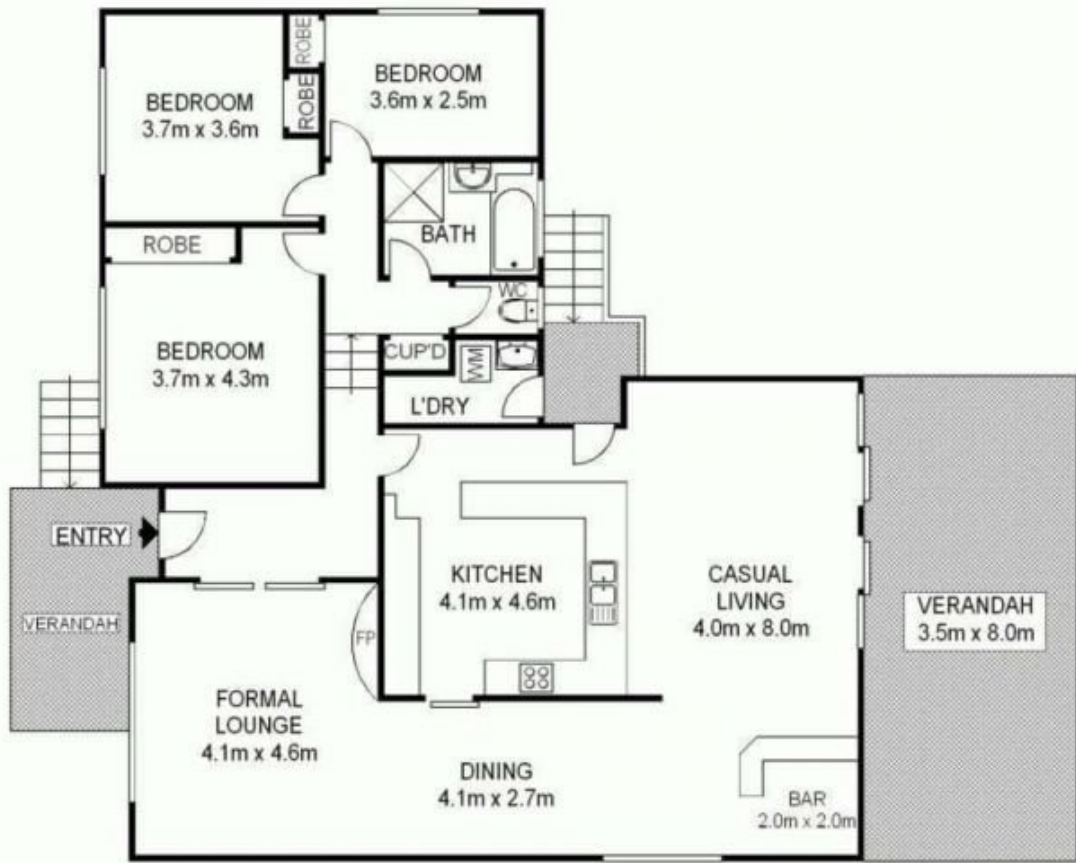
- Open floor plan reflects light-filled spaciousness and takes advantage of the private leafy outlook
- Formal lounge, a separate dining area and a family-friendly, cupboard-filled central kitchen with skylight, dishwasher - a delight for any cook
- That WOW factor is created by: the inviting casual living room complete with built-in bar and seamless flow through large double doors to the vogue-style tiled covered entertaining verandah, a high-set outlook and where you can

Price : \$900 per week

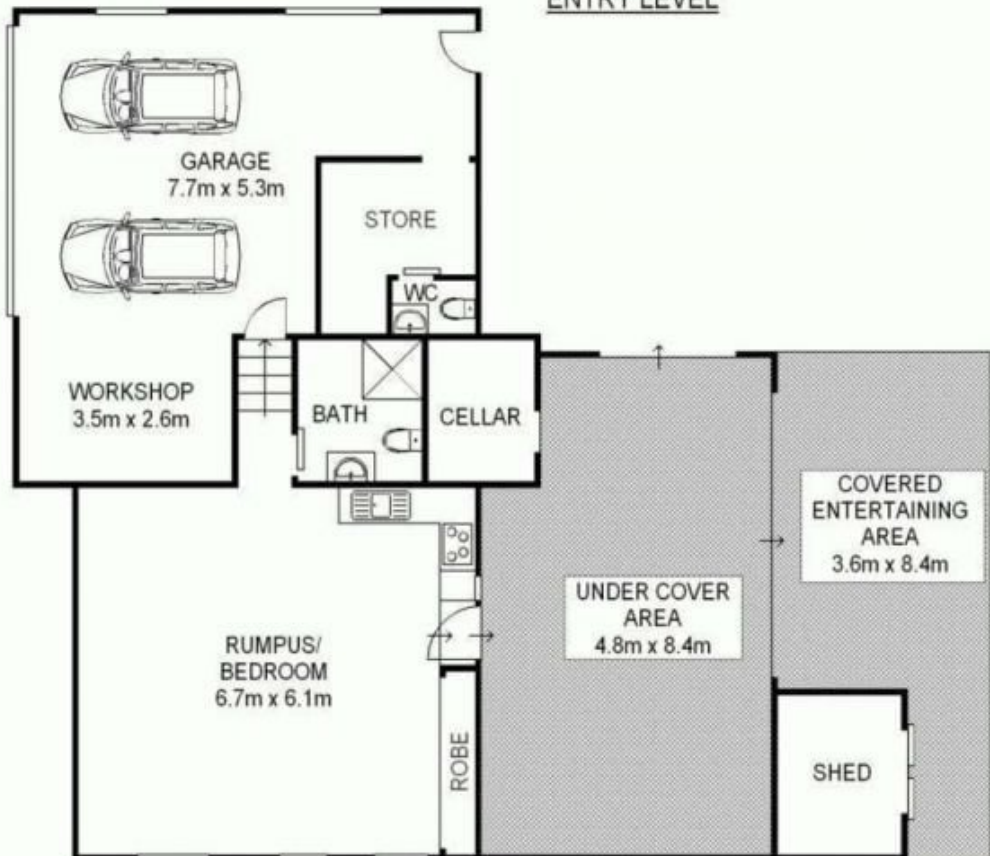
View : <https://www.gilmour.com.au/lease/nsw/hills/baulkham-hills/residential/house/8001217>



Gilmour Property Agents
02 9899 3311



ENTRY LEVEL



LOWER LEVEL



Scale shown in metres. All dimensions herein are approximate and gathered from sources believed to be reliable. Whilst every effort is made for the accuracy of our floor plans, interested parties should rely on their own enquiries. Floor Plans by Industrie Media | industriemedia.tv

