






11/1-3 Sherwin Avenue Castle Hill NSW

2  1  2 

Located in a quiet low-rise complex with a lovely sunny north aspect to the bedrooms, living area and balcony with views over the refreshing in ground swimming pool.

Just a short stroll to Castle Towers shopping centre, restaurants and the Metro train station. Walk through the grounds to Old Northern Road for quick access to the 610x express bus to the city via the M2 and it's in the catchment for the reputable Castle Hill Primary & High schools !

This light bright & airy 147m2 Unit is 115m2 internally including the balcony, 27m2 in the secure double lock up garage & has a storage room of 5m2.

A generous open plan apartment with lounge and dining areas and a study nook.

The spacious Polyurethane & 40mm granite kitchen with a

Price : Price Guide \$770,000- to \$830,000-
Land Size : 147 sqm
View : <https://www.gilmour.com.au/sale/nsw/hills/castle-hill/residential/unit/7981711>



Craig Alexis
02 9899 3311

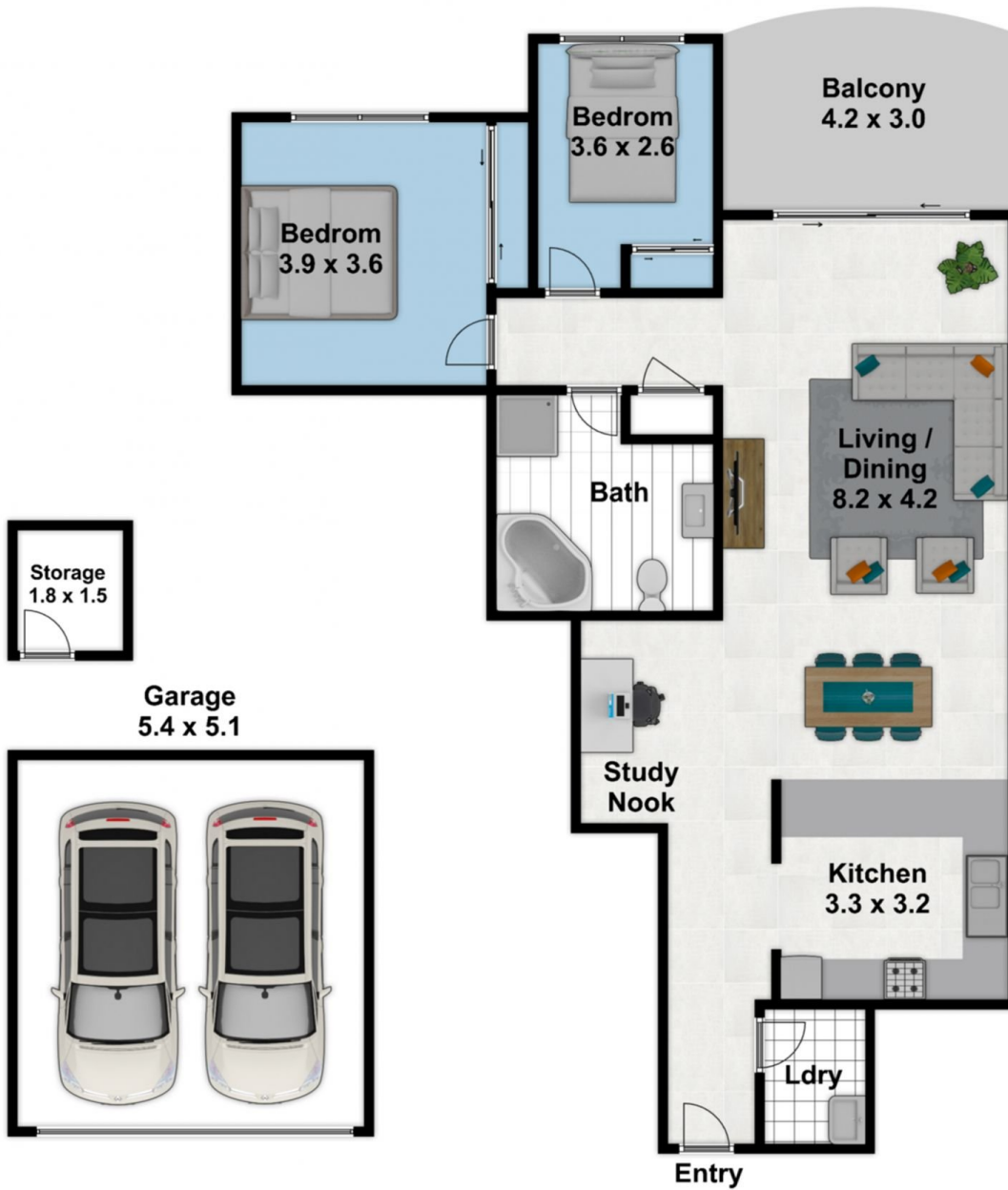
11/1-3 Sherwin Avenue, Castle Hill



Please note:

Floorplan measurements are a guide only.

All dimensions are approximate in their distance and volume.



-  2
-  1
-  2