



416/9 Gay Street Castle Hill NSW

2  2  1 

This 3 year young modern Unit is only a short stroll to the Castle Towers Shopping Centre & Metro Train Station with a perfect sunny north aspect to the generous open plan living area with 9ft ceilings and good size balcony.

Both bedrooms have built in wardrobes and the master has an ensuite with a frameless shower screen & access to the balcony.

Create culinary masterpieces in the modern white Polyurethane & Caesar stone gas gourmet kitchen with Smeg appliances and plenty of preparation area and storage cupboards.

The Ducted Air conditioning system takes out all the

[For full version visit the website](#)

Type : Unit
Price : Price Guide \$780,000- to \$830,000-
View : <https://www.gilmour.com.au/sale/nsw/hills/castle-hill/residential/unit/7795769>



Craig Alexis
02 9899 3311

416/9 Gay Street, Castle Hill

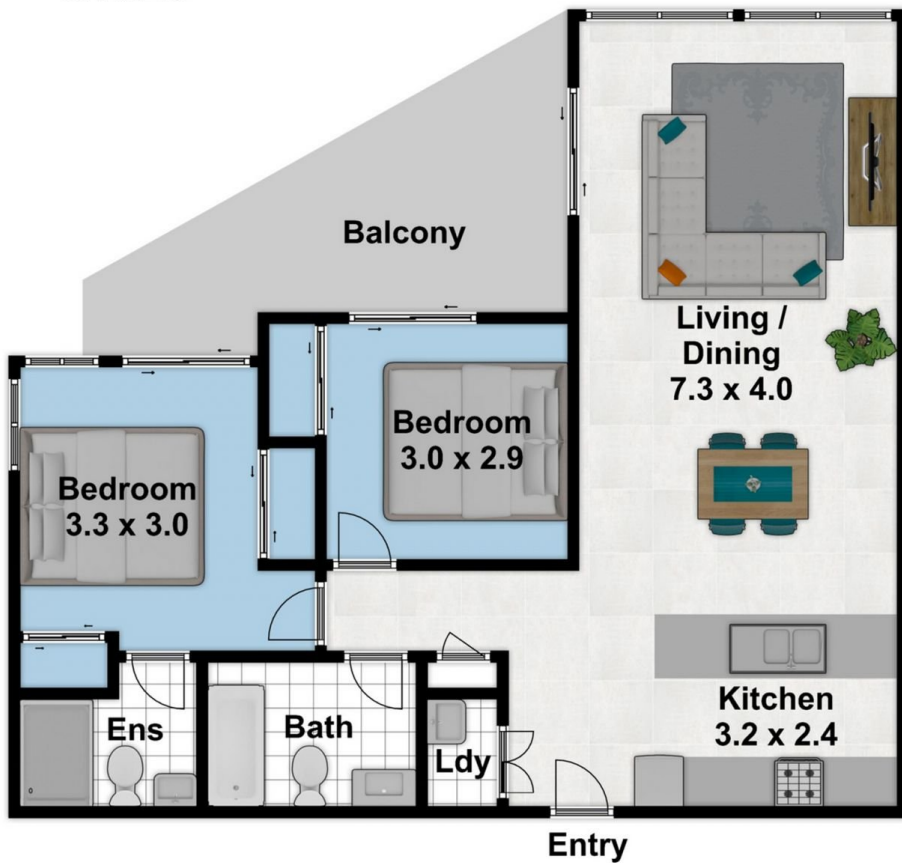
Please note:


Floorplan measurements are a guide only.

All dimensions are approximate in their distance and volume.



Car Space
5.4 x 2.6



-  2
-  2
-  1