

1/9-11 Brisbane Road Castle Hill NSW

3  2  2 

This centrally located townhouse on the high side of the street boasts no common walls and is nestled within 'Aspen Grove,' an exclusive boutique complex comprising only seven homes. Ideal for small families, investors seeking a property within R4 zoning, or professional couples wanting low-maintenance living, it offers convenient access to Castle Hill Metro and the vibrant shopping and entertainment hub of Castle Towers.

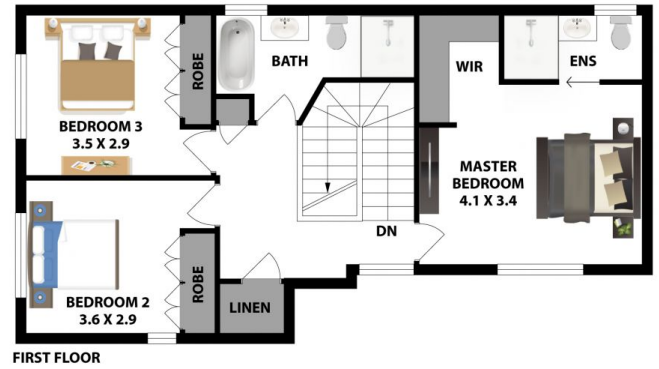
Its features include three good-sized bedrooms with built-in robes (BIR), a master bedroom with a walk-in robe (WIR) and en-suite, a kitchen equipped with gas cooking, a pantry, and a breakfast bench.

Throughout the house, bamboo timber flooring adds a touch of elegance, complementing the split-system air conditioners that ensures comfort year-round. The

Price : \$ 1,430,000
Building Size : 170 sqm
View : <https://www.gilmour.com.au/sale/nsw/hills/castle-hill/residential/townhouse/7746410>



Brendan Dabaja
0410 978 133



1/9-11 BRISBANE RD, CASTLE HILL

DISCLAIMER:

All information contained herein is gathered from sources we consider reliable. However, we cannot guarantee or give away any warranty to the information provided.

