






## 48 Saddlebred Way Box Hill NSW

5  3  2 

This high quality, Eden Brae Bristol 30, complete with guest suite option is 30.4 squares or 282.5m<sup>2</sup>. Better than new and complete with upgrades and established landscaping, this stunning home is only 10 months old. Located in a high position on a quiet street with stunning views from the master bedroom and deck over acreage in the distance. 5 bedrooms including a guest room down stairs with a bathroom for the parents or the in-laws when they visit. The master bedroom has a generous walk-in robe and a huge ensuite, incorporating a double size shower, his & her vanity basins and a separate toilet. All other bedrooms include built-in robes. The impressive main bathroom also has a double size shower and a free-standing bath to soak in and relax after a hectic day.

This brilliant design boasts 4 living areas with the lounge room, an open plan dining area and huge family relaxing

**Building Size** : 282.5 sqm  
**Land Size** : 325 sqm  
**View** : <https://www.gilmour.com.au/sale/nsw/western-sydney/box-hill/residential/house/7168742>



**Craig Alexis**  
 02 9899 3311

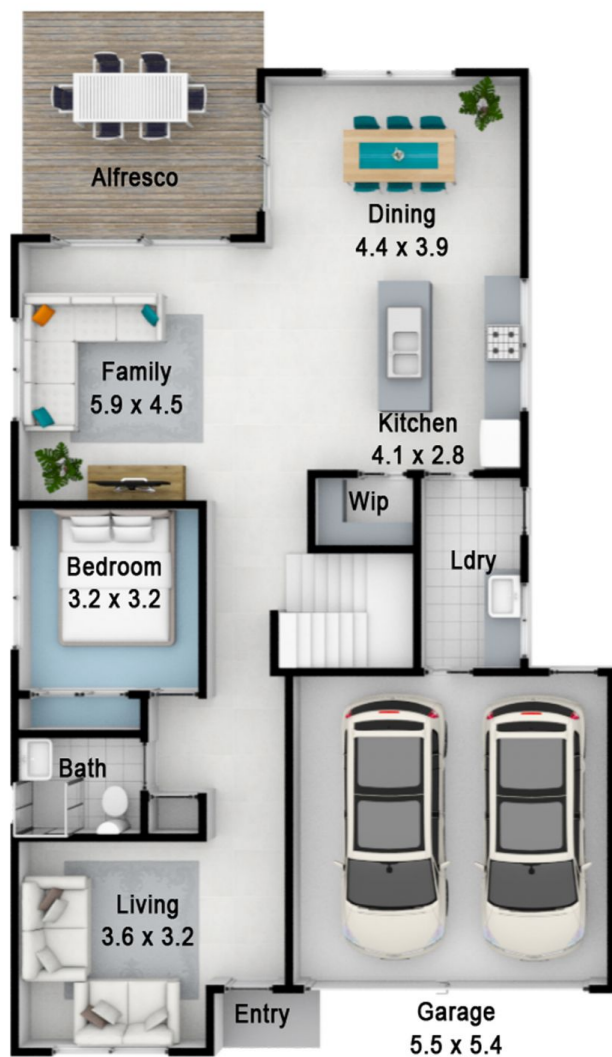
# 48 Saddlebred Way, Box Hill

Please note:

Floorplan measurements are a guide only.

All dimensions are approximate in their distance and volume.

Rear



Lower Floor



Upper Floor

	5
	3
	2

Front

