



11/1-7 Hume Avenue Castle Hill NSW

2 2 2

Conveniently located within walking distance to m2 city bus stop, Castle Towers shopping centre with the Metro train station adjoining and the Castle Hill Primary & High Schools.

This easy to live in, spacious two-storey unit is 180sqm in total and has the open plan living and dining areas close to the Polyurethane and granite gas gourmet kitchen perfect for preparing memorable meals.

The painting is fresh, the laminated flooring is a lovely creature comfort and great for people with allergies. There is a seamless transition from the living space to the balcony which benefits from a lovely sunny north aspect ideal to entertain with family and friends or a quiet place to read a good book.

Price : \$ 905,500
Building Size : 180 sqm
View : <https://www.gilmour.com.au/sale/nsw/hills/castle-hill/residential/unit/6950823>



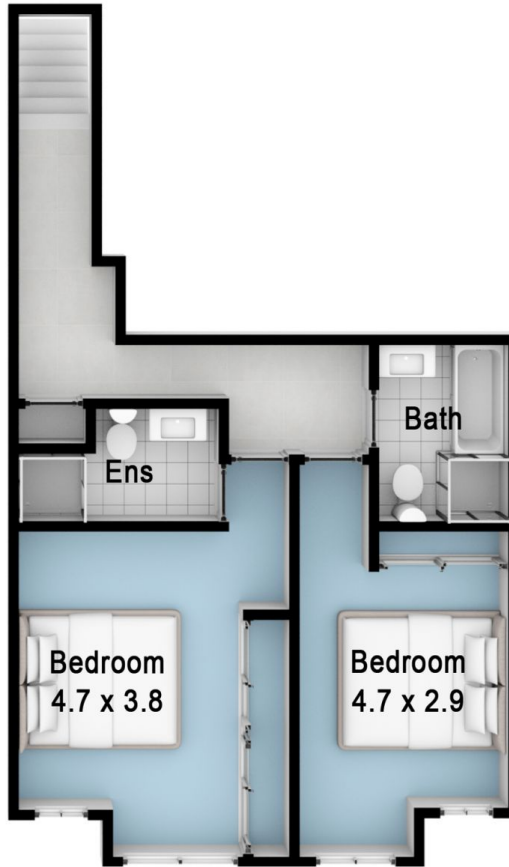
Craig Alexis
02 9899 3311

11/1-7 Hume Avenue, Castle Hill

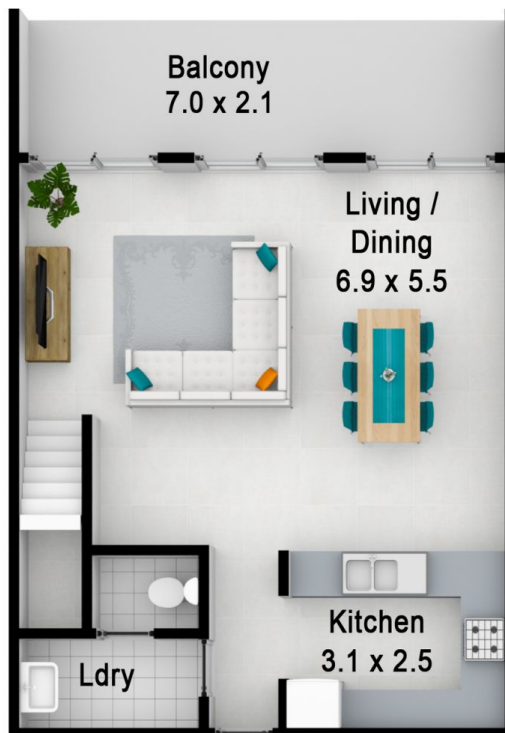
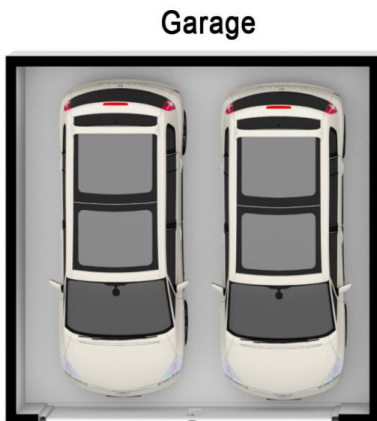
Please note:

Floorplan measurements are a guide only.

All dimensions are approximate in their distance and volume.



Upper Floor



Lower Floor

-  2
-  2
-  2