



20 Iezza Place Kellyville Ridge NSW

4  2  2 

Perfect for those who enjoy an easy maintenance lifestyle is this spacious, spectacular single level family home which is nestled in a peaceful cul-de-sac and is within walking distance to John Palmer Public School, The Ponds Shopping Centre and bus transport with easy access to Rouse Hill Town Centre, The Ponds High School and Sydney Metro Stations.

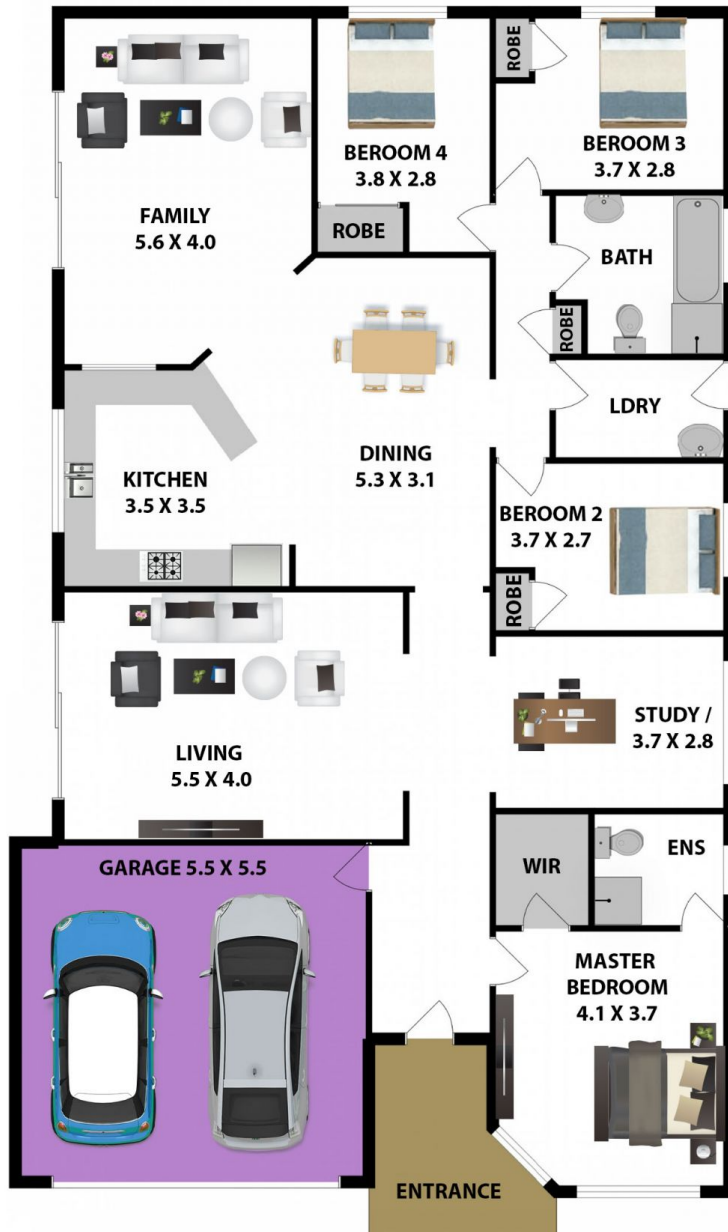
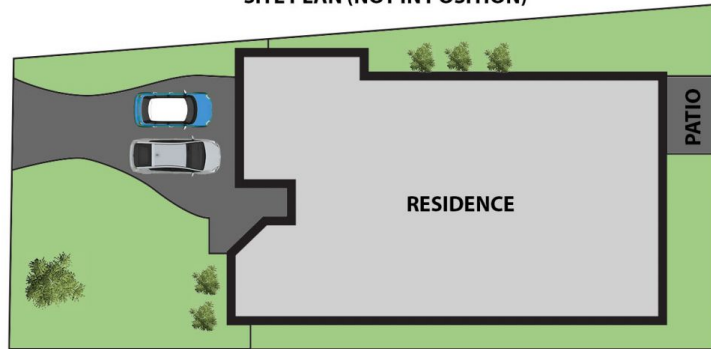
- Four great sized bedrooms all with built-in wardrobes
- Main bedroom features a walk-in wardrobe and ensuite
- Living, Dining, Family and Study areas
- Ducted air-conditioning throughout
- Large gas cooking kitchen with plenty of storage space, dishwasher and pantry
- Double garage with internal access
- Spacious internal laundry with side yard access
- Easy care low maintenance yard featuring a Patio

Price : \$ 1,150,000
Land Size : 467 sqm
View : <https://www.gilmour.com.au/sale/nsw/hills/kellyville-ridge/residential/house/6149738>



Brendan Dabaja
0410 978 133

SITE PLAN (NOT IN POSITION)



20 Iezza Pl, Kellyville Ridge

DISCLAIMER:

All information contained herein is gathered from sources we consider reliable however we cannot guarantee or give away any warranty to the information provided.

