



**35 Palace Road Baulkham Hills NSW**

3 2 2

The bullnose verandah welcomes you onto the sun drenched country style front deck ideal for a morning coffee and a good book whilst admiring the beautifully landscaped vista.

The high ceilings draw you in to this magnificent surprise package and the lounge greets and sends you on to the dining room adjacent to the country inspired kitchen with loads of cupboards & preparation area.

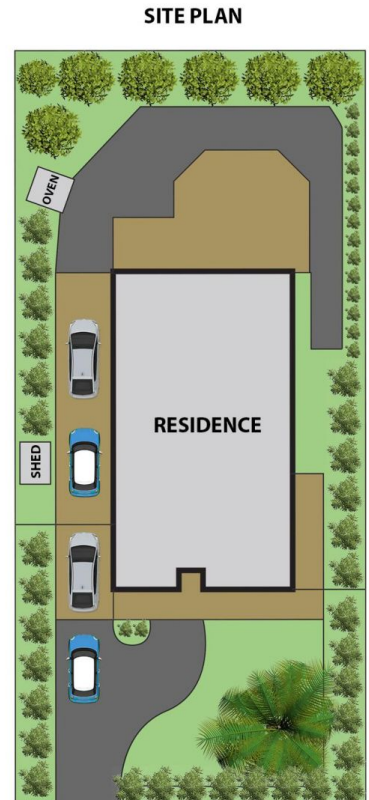
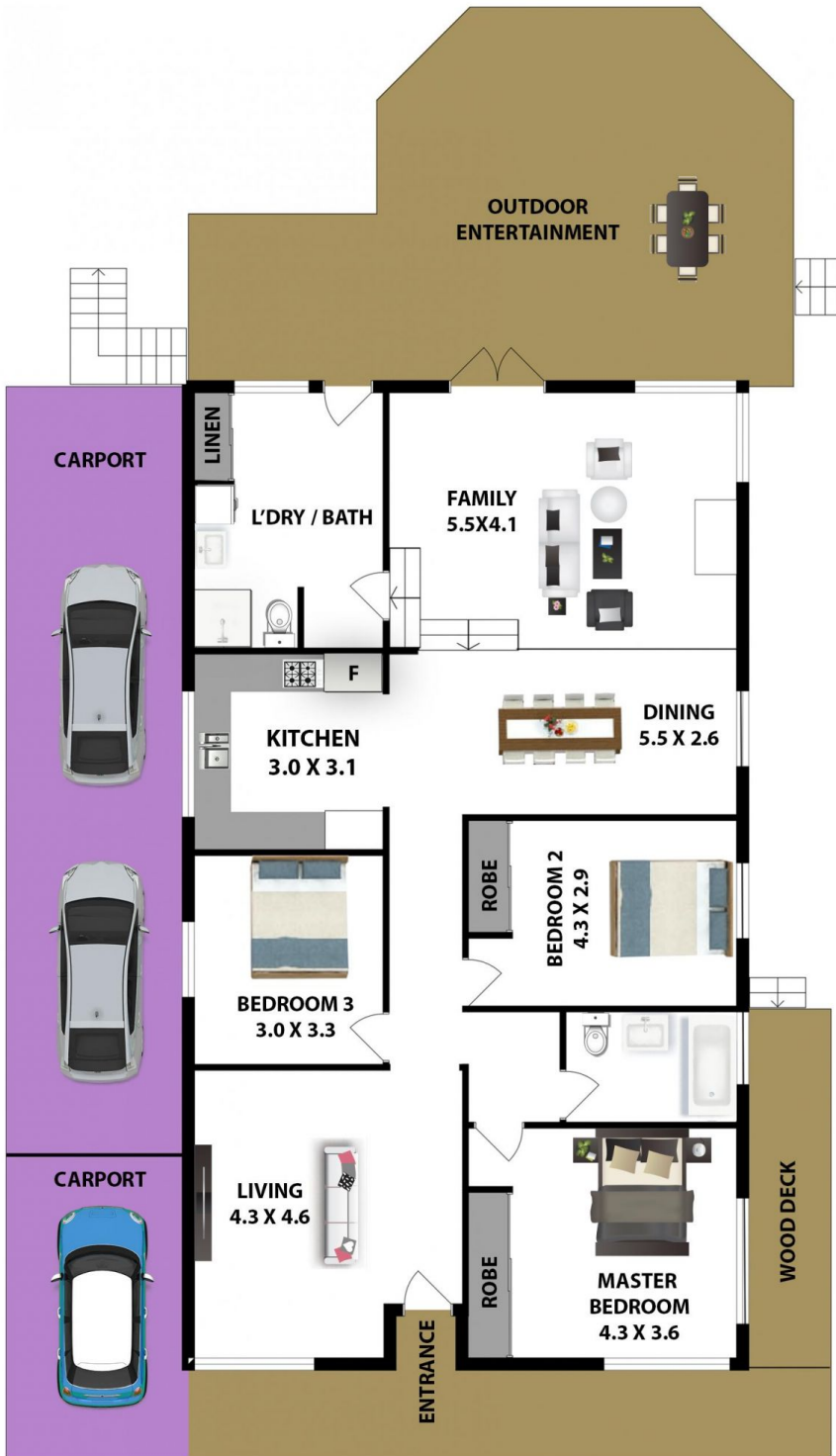
The family relaxing area with even higher ceilings has a slow combustion fire place to keep you warm in winter & a split system to cool things down in summer. All 3 bedrooms are close to each other & the tasteful main bathroom acts as an ensuite too.

The enormous laundry has a 2nd bathroom & heaps of

**Price** : \$ 1,151,200  
**Land Size** : 834.9 sqm  
**View** : <https://www.gilmour.com.au/sale/nsw/hills/baulkham-hills/residential/house/5812342>



**Craig Alexis**  
02 9899 3311



## 35 Palace Rd, Baulkham Hills

**DISCLAIMER:**

All information contained herein is gathered from sources we consider reliable however we cannot guarantee or give away any warranty to the information provided.

