

2/235 Windsor Road Northmead NSW

3  2  2 

Gilmour Property Agents are proud to present to you this spacious and highly convenient three-bedroom townhouse nestled on the rear side of the complex (with entry from Dremeday Street).

This home offers a superbly fitted kitchen with Caesar stone bench-tops, high-end appliances, a large island bench and is perfect for those seeking a quiet, low-maintenance home that ticks all the boxes.

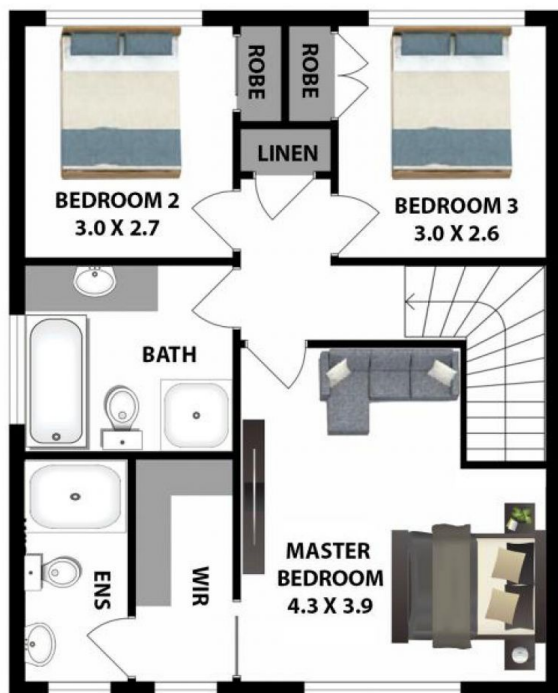
At a glance:

- Three great-sized bedrooms, all with built-in wardrobes including a walk-in wardrobe and ensuite in the large master-bedroom
- Open plan lounge and dining area with wooden flooring throughout
- Air conditioning, ceiling fans, plenty of storage space

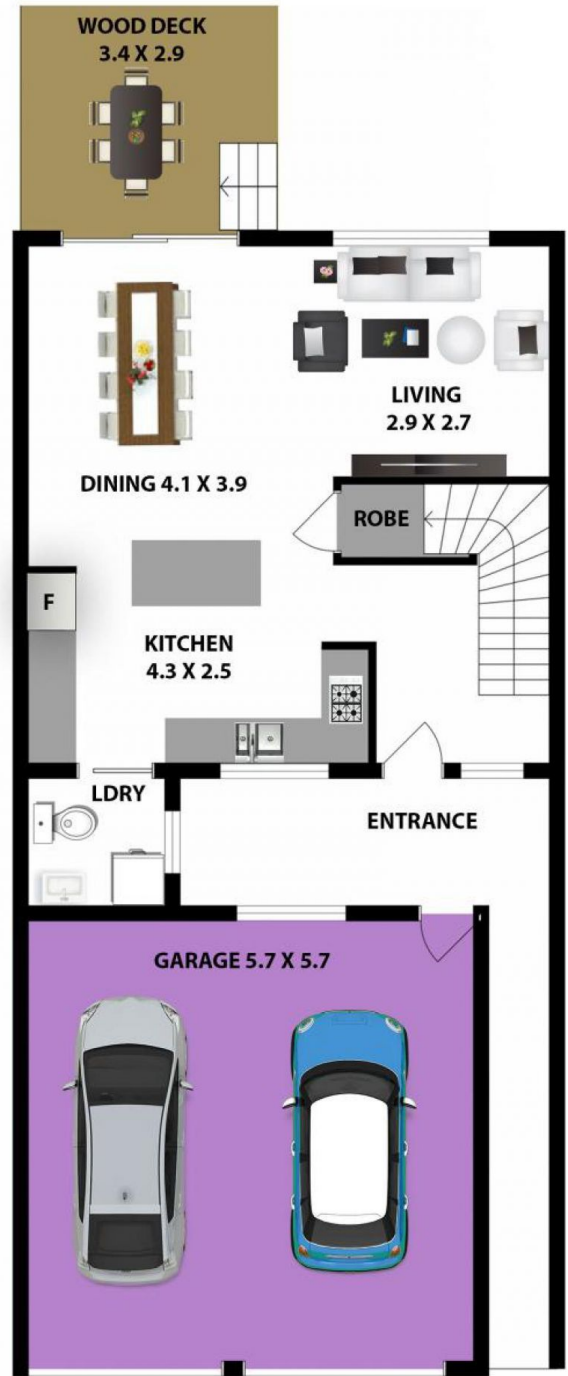
Building Size : 203 sqm
View : <https://www.gilmour.com.au/sale/nsw/parramatta/northmead/residential/townhouse/5709905>



Brendan Dabaja
 0410 978 133



FIRST FLOOR



GROUND FLOOR

2/235-241 Windsor Road, Northmead

DISCLAIMER:

All information contained herein is gathered from sources we consider reliable however we cannot guarantee or give away any warranty to the information provided.

