



65 Parsonage Road Castle Hill NSW

3 1 2

Attention first home buyers looking to get a foothold in Castle Hill or astute investors looking for a good yield this year

THE BLOCK: Set on a regular shape 765m(2) block with a lovely sun dappled northerly aspect to the front. Privacy assured with an established border of Leighton pines, Murrayas' and Camellias all around. Parking for up to 4 cars with a garage, separate carport, and recycled brick turning & parking bay.

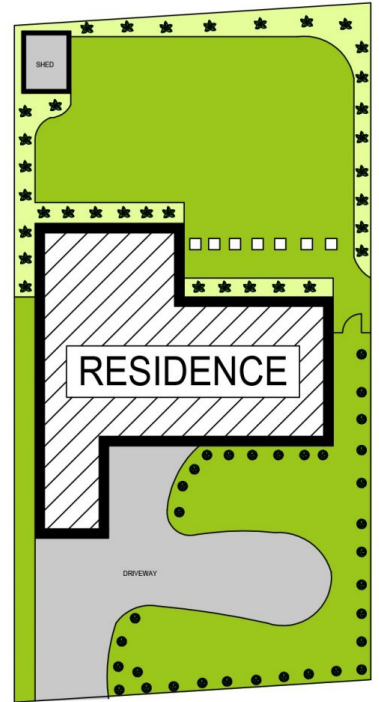
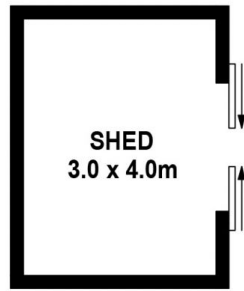
TRANSPORT: walking distance to bus stops, M2 City buses, Castle Towers Interchange and the new Showground train station.

Type : House
Land Size : 765 sqm
View : <https://www.gilmour.com.au/sale/nsw/hills/castle-hill/residential/house/5621089>

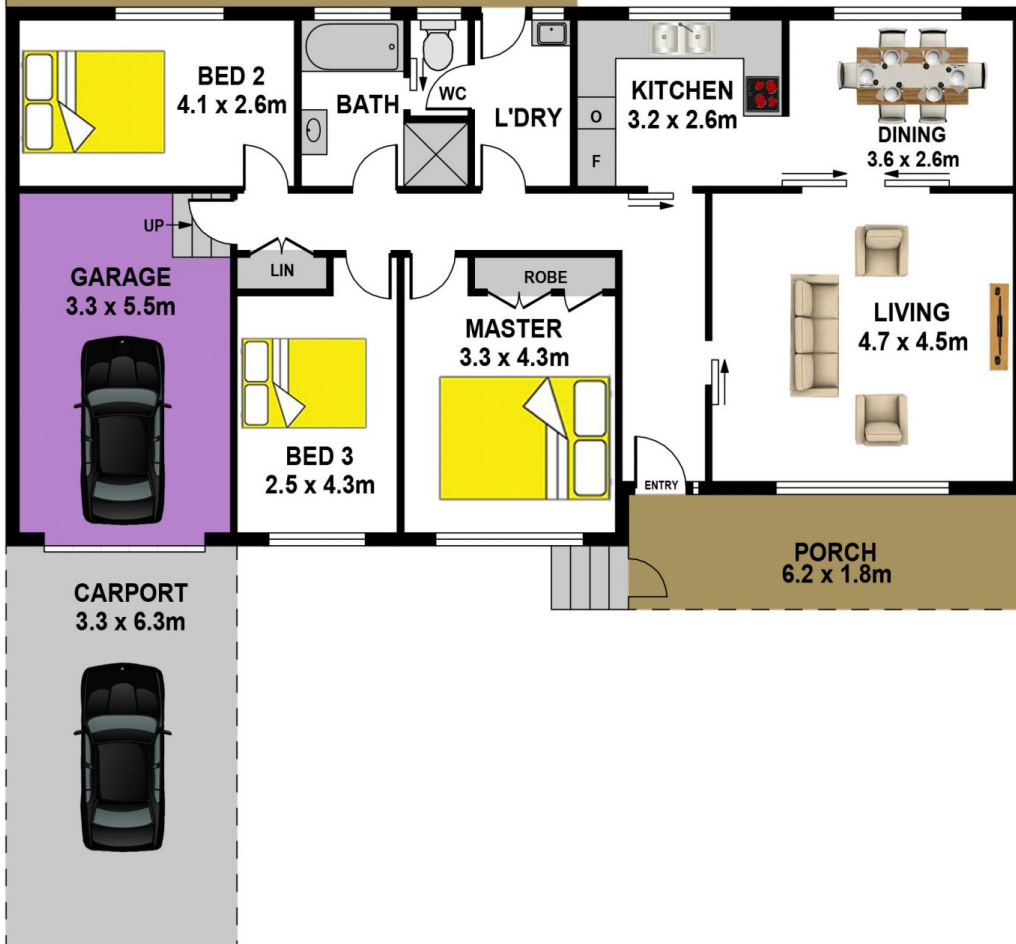


Craig Alexis
02 9899 3311

[For full version visit the website](#)



SITE PLAN



65 PARSONAGE ROAD, CASTLE HILL

DISCLAIMER:

All information contained herein is gathered from sources we consider to be reliable however we cannot guarantee or give any warranty to the information provided.