



## 46 Nathaniel Parade Kings Langley NSW

4  2  1 

Excellent size entry level property with potential to move straight in, renovate or even build a dual occupancy or granny flat, subject to Council approval.

On a large, rectangular, 696sqm block with a lovely sunny north aspect to the backyard, sits a single level brick and tile home ready for new owners or tenants to move in, relax & enjoy.

The polished floorboards and fresh paint will appeal to those looking for a modern touch.

There are four bedrooms, three with built-in wardrobes and the master has an en-suite. The lounge and dining area are well proportioned and the split system air-conditioning makes the temperature pleasant all year round.

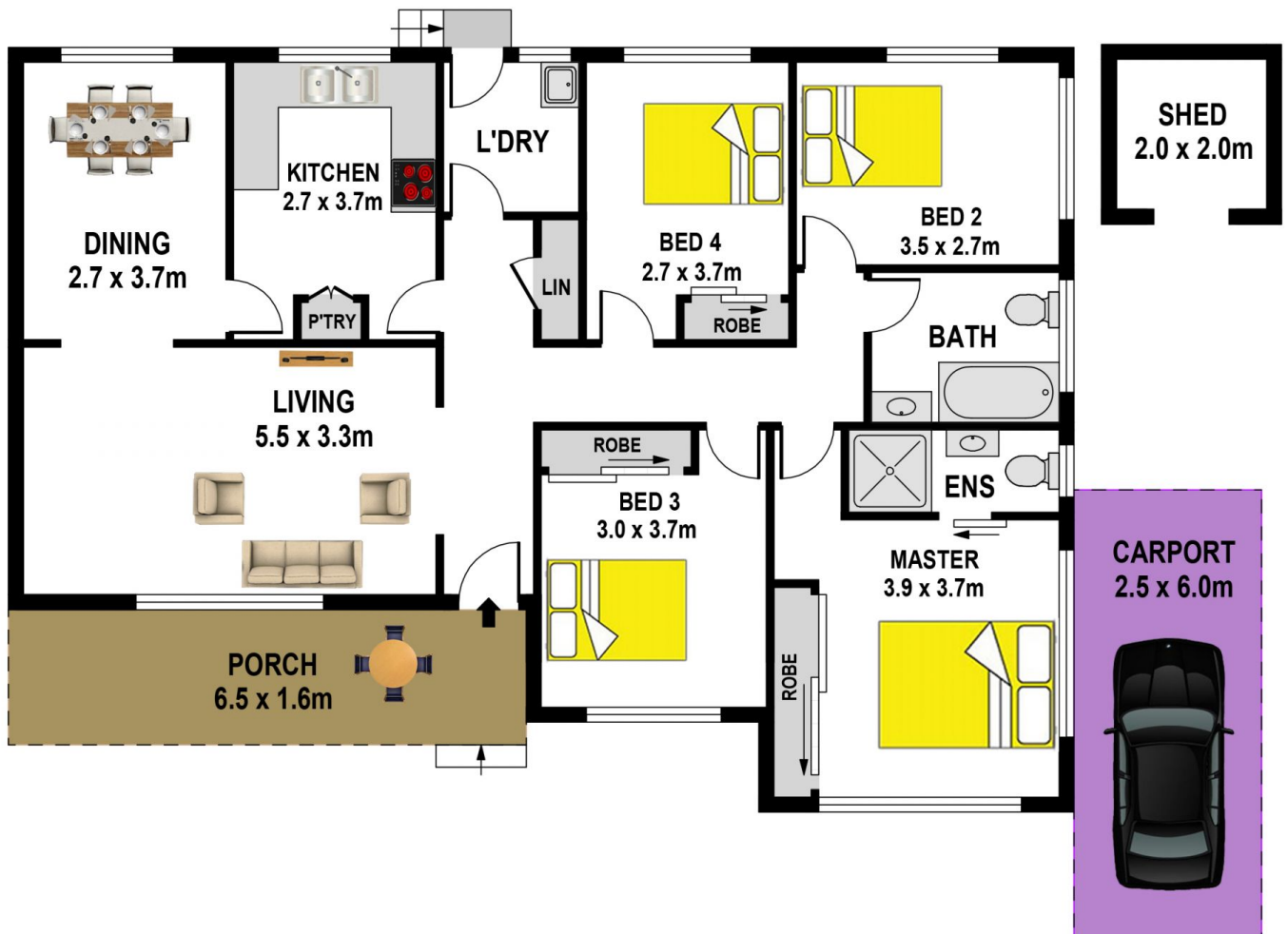
**Price** : \$ 775,600  
**Land Size** : 696 sqm  
**View** : <https://www.gilmour.com.au/sale/nsw/western-sydney/kings-langley/residential/house/5621077>



**Craig Alexis**  
 02 9899 3311



SITE PLAN



46 NATHANIEL PARADE, KINGS LANGLEY

DISCLAIMER:

All information contained herein is gathered from sources we consider to be reliable however we cannot guarantee or give any warranty to the information provided.