



26 Shelly Crescent Beaumont Hills NSW

5 3 2

Impressive upon entrance, this large double storey residence set on a generous 672m² block, combines multiple large living spaces that open to a sparkling in ground pool and entertaining area. With views to the Blue Mountains, bike/walking track and reserve across the road. A beautiful home flooded with natural light and located within walking distance to the local shopping centre - this really is a lifestyle rare to find!

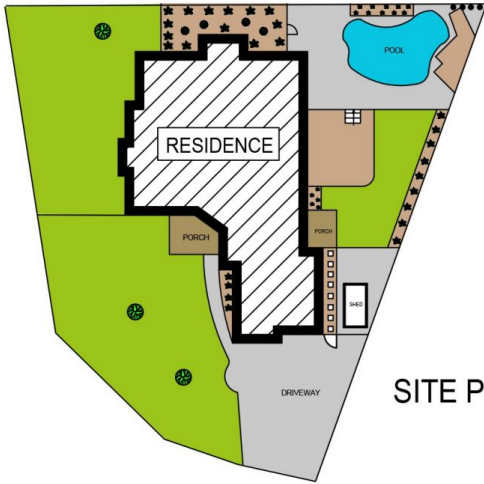
- Five spacious bedrooms including master with double walk in robe and luxurious ensuite and another with a bay window
- Kitchen with double oven, gas cooktop, breakfast servery and Caesar-stone bench tops with an adjoining bar area
- High ceilings, Blue Mountains views and a chimney with

Type : House
Land Size : 672 sqm
View : <https://www.gilmour.com.au/sale/nsw/hills/beaumont-hills/residential/house/5620941>

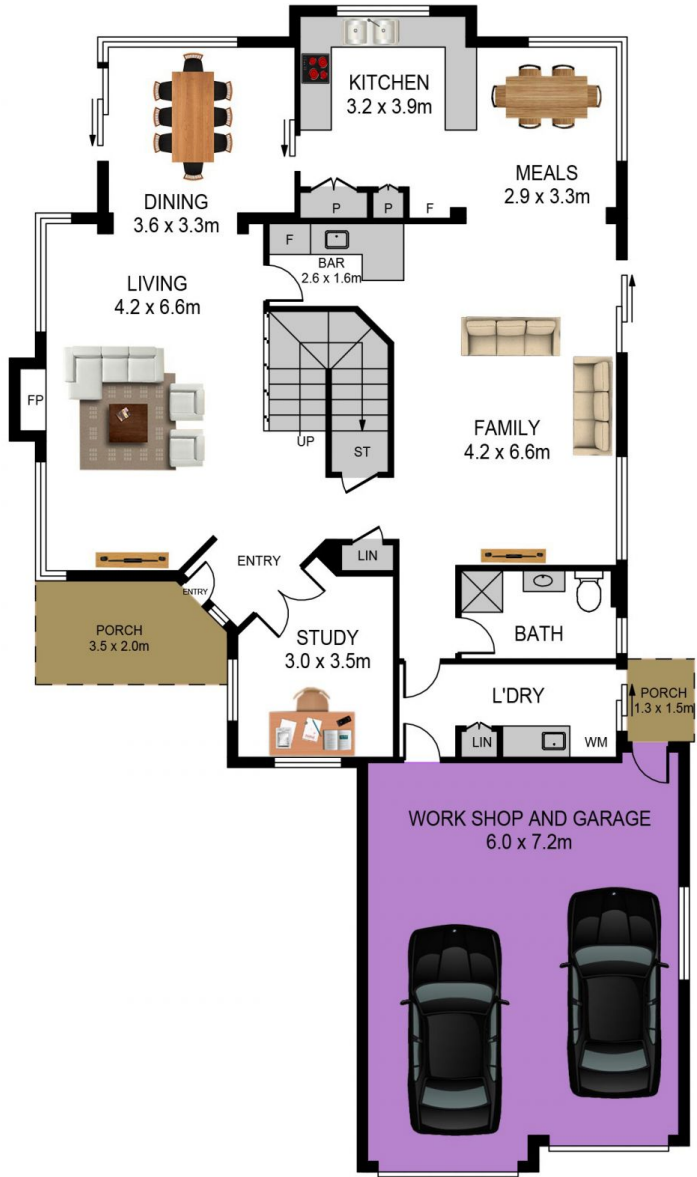
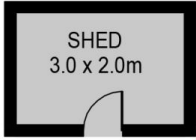


Gilmour Property Agents
02 9899 3311

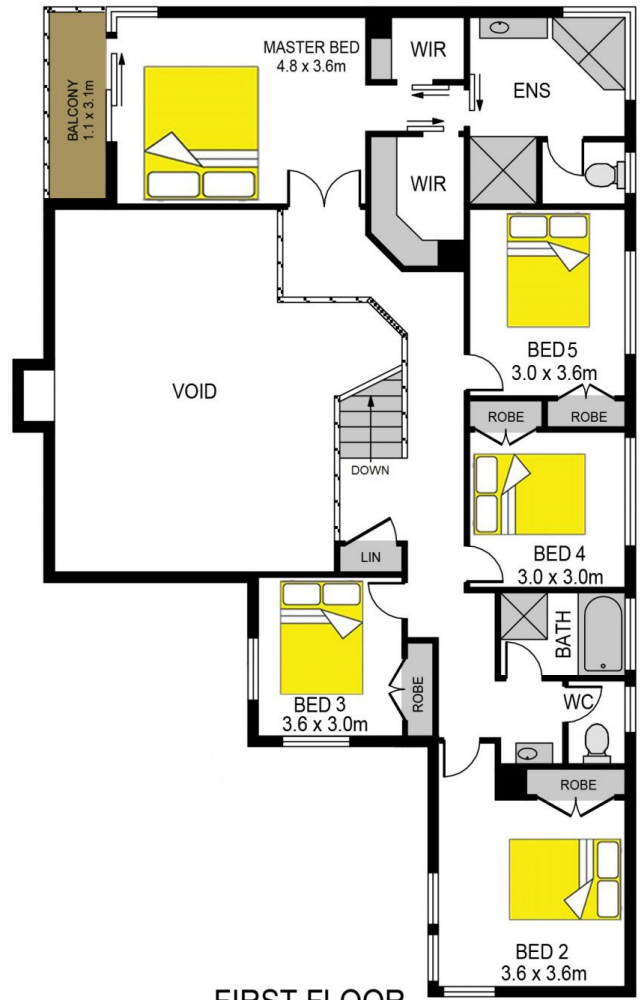
[For full version visit the website](https://www.gilmour.com.au)



SITE PLAN



GROUND FLOOR



FIRST FLOOR

26 SHELLY CRESCENT, BEAUMONT HILLS

DISCLAIMER:

All information contained herein is gathered from sources we consider to be reliable however we cannot guarantee or give any warranty to the information provided.

