



13 Huxley Drive WINSTON HILLS NSW

4  1  2 

This beautifully presented and stylishly renovated family home is conveniently located within walking distance to schools, shops and public transport. Presenting endless entertaining opportunities with two timber decks; one at the front, the other opening from the enormous family room, this home is a real surprise package.

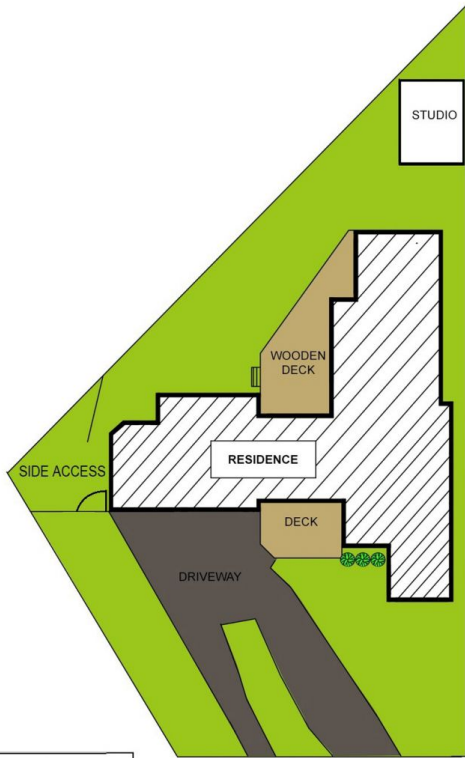
- Tastefully finished in a neutral colour scheme with polished timber floors throughout, the design captures the natural light that fills the home.
- The free-flowing living and dining room leads to the modern kitchen which boasts integrated stainless steel appliances.
- All bedrooms feature built-in wardrobes and additional storage is found throughout the home with a spacious laundry plus a large linen cupboard near the updated

Type : House
Land Size : 708.2 sqm
View : <https://www.gilmour.com.au/sale/nsw/hills/winston-hills/residential/house/5620789>

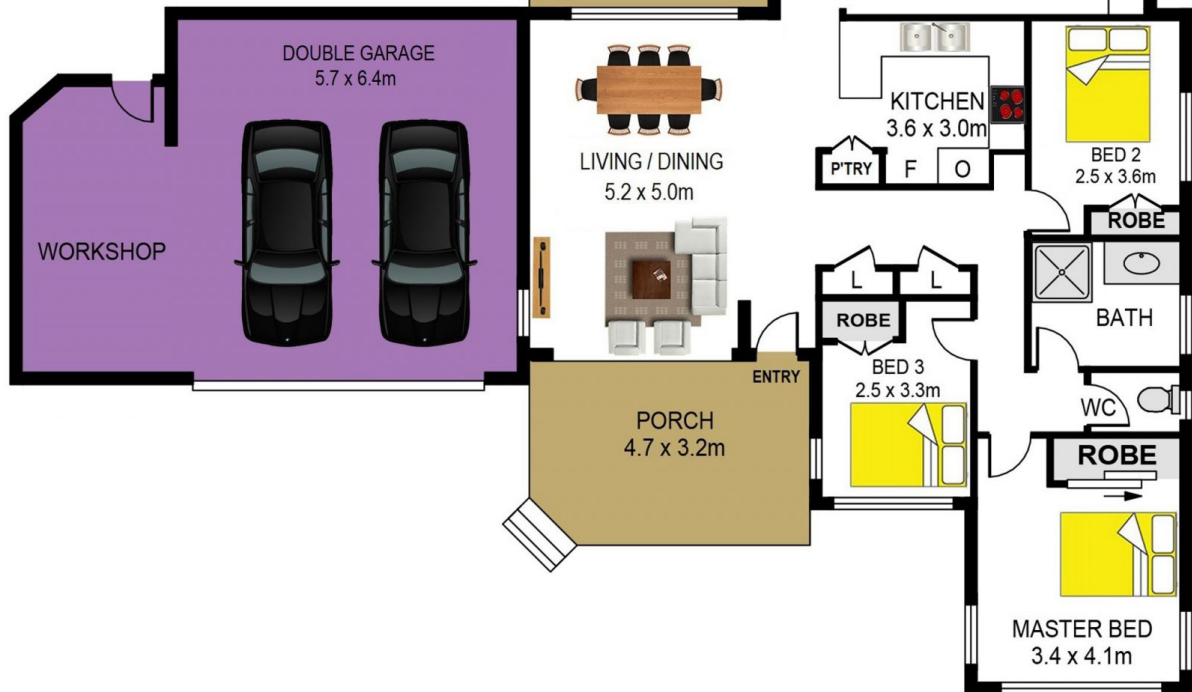
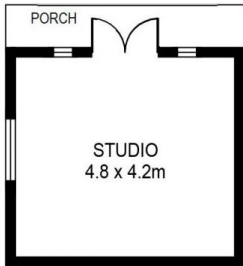


Gilmour Property Agents
02 9899 3311

[For full version visit the website](https://www.gilmour.com.au)



SITE PLAN



13 HUXLEY DRIVE, WINSTON HILLS

DISCLAIMER:

PLANS SHOWN ARE FOR MARKETING PURPOSES ONLY. ALL DIMENSIONS ARE APPROXIMATE AND NOT TO SCALE. THEY ARE SUBJECT TO ERRORS AND INACCURACIES AND NO LIABILITY WILL BE ACCEPTED. INTERESTED PARTIES SHOULD MAKE THEIR OWN INQUIRES.

