



3/12-18 Sherwin Avenue CASTLE HILL NSW

2 2 2

Looking for an amazing sunny north facing ground floor unit overlooking a park? Look no further. Just a short stroll to the Castle Towers and Castle Mall shopping centres, the new train station under construction, local schools and the city bus. This immaculate 179sqm, two bedroom unit is ready for new owners who don't want to spend extra on fixing or improving anything.

- The generous living area and separate dining room compliment the Polyurethane and Caesearstone gourmet gas kitchen.
- Great size bedrooms have built-in wardrobes and the master has a walk-in-robe plus ensuite.
- The ducted air conditioning system takes care of all the seasonal variations in temperature, the 9ft ceilings give a sense of space and the new carpet and paint work really

Type : Apartment

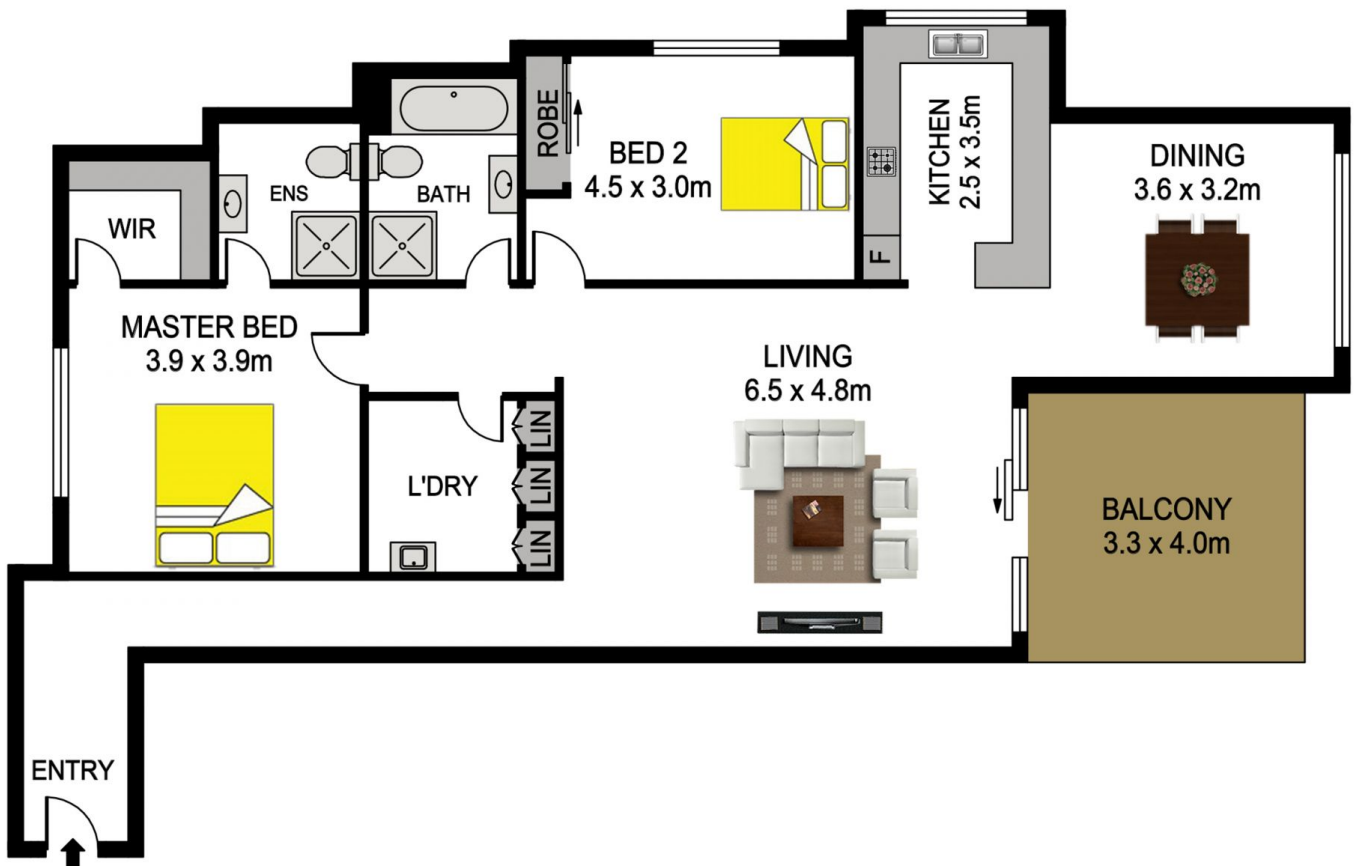
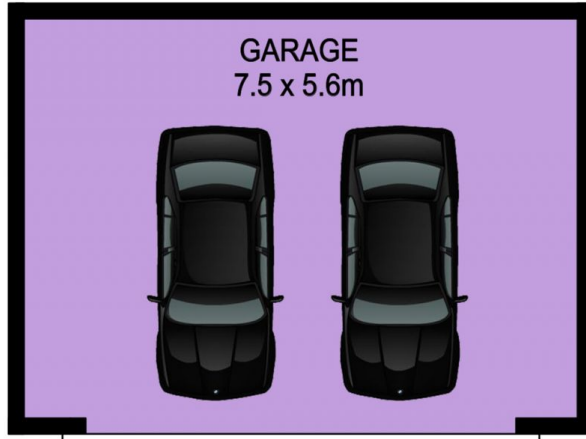
View : <https://www.gilmour.com.au/sale/nsw/hills/castle-hill/residential/apartment/5620770>



Craig Alexis
02 9899 3311

[For full version visit the website](#)

N



3/12-18 SHERWIN AVENUE, CASTLE HILL

DISCLAIMER

PLANS SHOWN ARE FOR MARKETING PURPOSES ONLY, ALL DIMENSIONS ARE APPROXIMATE AND NOT TO SCALE. THEY ARE SUBJECT TO ERRORS AND INACCURACIES AND NO LIABILITY WILL BE ACCEPTED. INTERESTED PARTIES SHOULD MAKE THEIR OWN INQUIRES.

