



31 Mapleton Avenue KELLYVILLE NSW

4 🚗 3 🚗 2 🚗

In immaculate condition, this modern family home presents a truly exceptional standard of living. Quality design by Metricon maximises space and natural light, creating bright and welcoming interiors.

- Open-plan living areas are child-friendly and spacious; with a separate dining room, kids' playroom, lounge room and upstairs rumpus. The enormous main living room opens via bi-fold doors to an alfresco entertaining area and private backyard for the kids.

- Four bedrooms offer ample space for the whole family; each containing built-in robes and large windows. The immense master bedroom features a private balcony, walk-in robe and full ensuite with dual vanities and double showerhead.

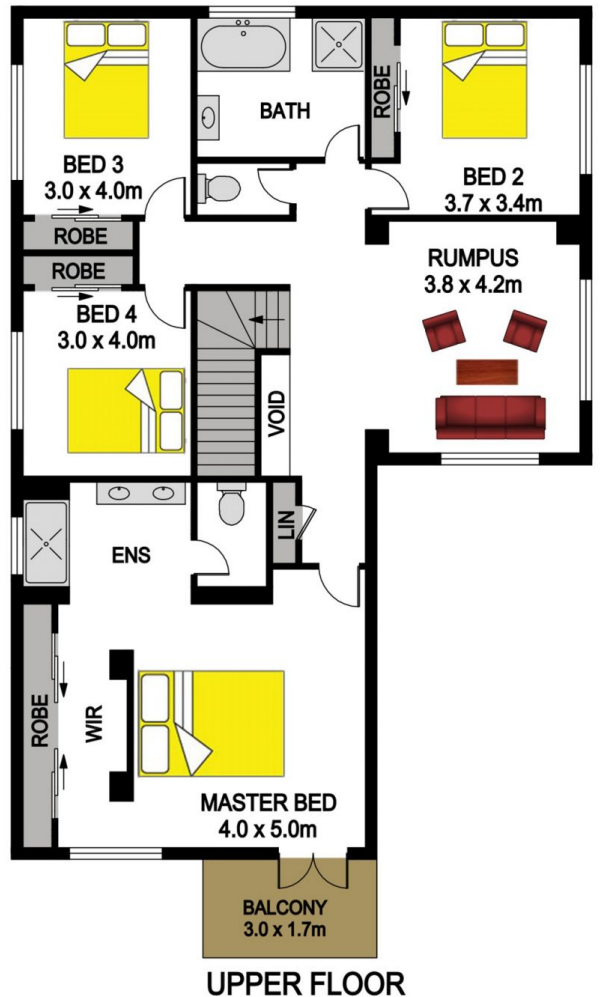
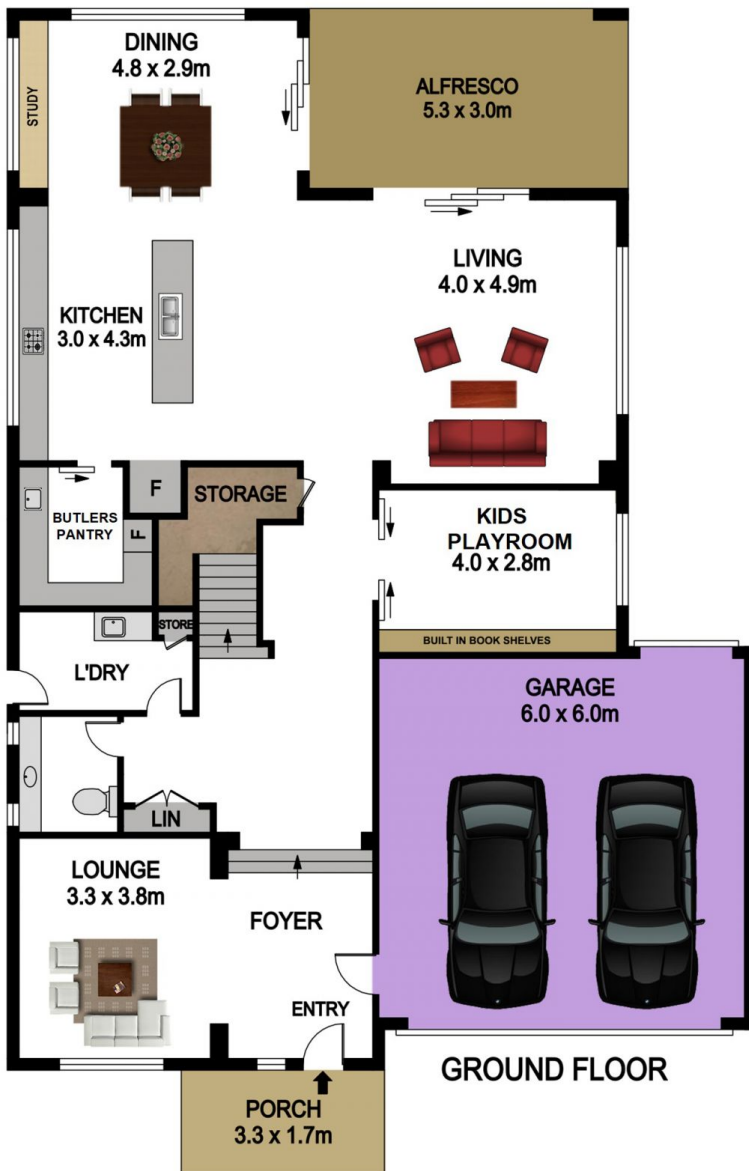
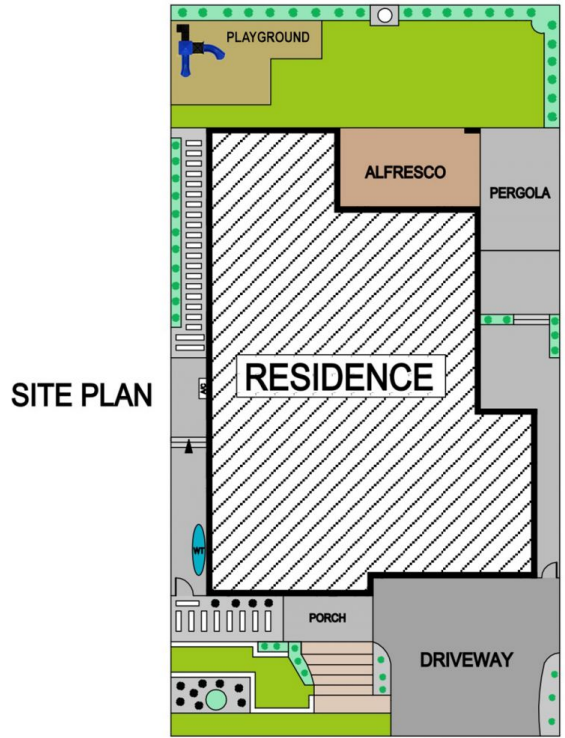
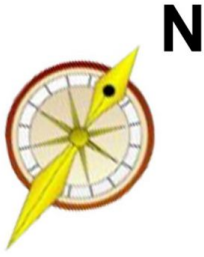
- Large kitchen with island bench, Caesarstone surfaces

Type : House
Land Size : 480 sqm
View : <https://www.gilmour.com.au/sale/nsw/hills/kellyville/residential/house/5620766>



Gilmour Property Agents
02 9899 3311

[For full version visit the website](https://www.gilmour.com.au)



31 MAPLETON AVENUE, KELLYVILLE

DISCLAIMER

All information contained herein is gathered from sources we consider to be reliable, however we cannot guarantee or give any warranty to the information provided.