



## 2 Settlers Close CASTLE HILL NSW

5 3 2

With commanding street appeal, set in a cul-de-sac location on a 900.6sqm parcel of land, this beautifully maintained family home is well proportioned and suited for today's family lifestyle. Open living areas flow to an undercover pergola with a sparkling in-ground pool, perfectly positioned amongst private and established gardens.

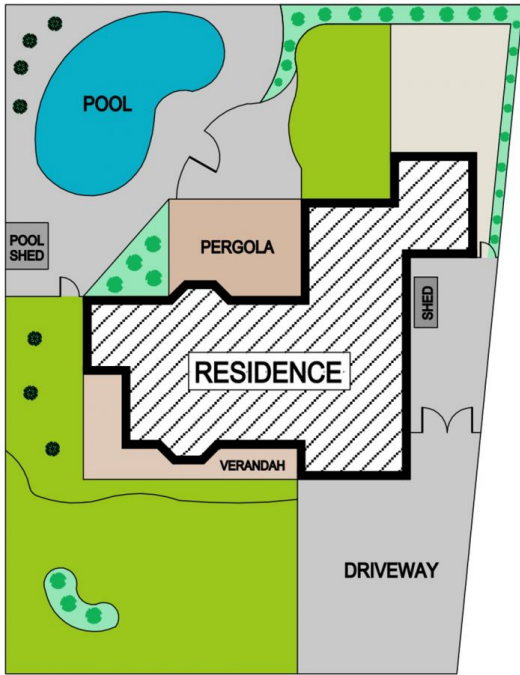
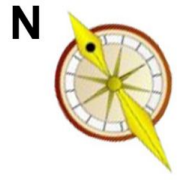
- Spacious separate lounge and dining rooms, timber kitchen offering modern appliances and adjoining a spacious meals/family area overlooking the pool.
- Expansive rumpus room adjoining an oversized fifth bedroom presenting ideal in-law accommodation.
- Featuring five generous bedrooms all with built-in wardrobes, master bedroom with en-suite, main bathroom upstairs and third bathroom downstairs.

**Type** : House  
**Land Size** : 900.6 sqm  
**View** : <https://www.gilmour.com.au/sale/nsw/hills/castle-hill/residential/house/5620765>

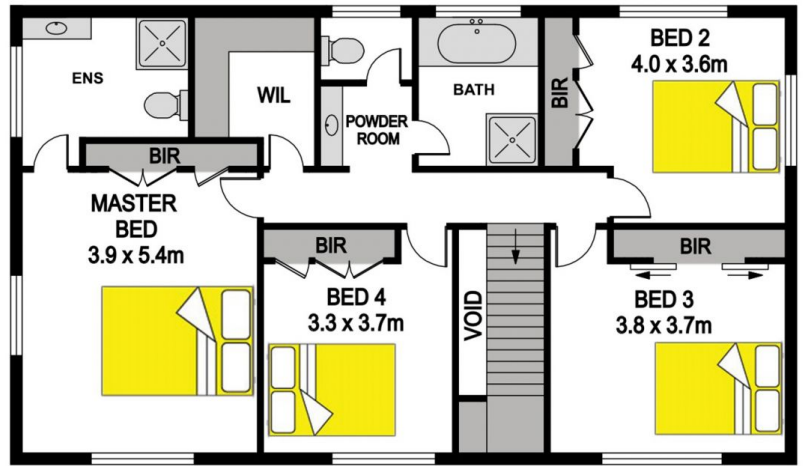


**Gilmour Property Agents**  
**02 9899 3311**

[For full version visit the website](https://www.gilmour.com.au)



SITE PLAN



UPPER FLOOR



GROUND FLOOR

## 2 SETTLERS CLOSE, CASTLE HILL

DISCLAIMER

All information contained herein is gathered from sources we consider to be reliable, however we cannot guarantee or give any warranty to the information provided.

