

6/33-39 Cecil Avenue CASTLE HILL NSW

2 2 2

Stylish first floor apartment with 9ft ceilings in the ever popular Verincourt Estate has two bedrooms each with built-ins, including the master with additional bathroom and striking feature wall.

- The generous gourmet polyurethane kitchen is complete with waterfall edged Caesarstone benchtops, gas cooking and stylish European appliances.
- Entertaining is easy with the terrific open plan lounge and dining rooms flowing out to the spacious north facing balcony with a lovely outlook and district view .
- The unit is approximately 174sqm in total and is completed with ducted air-conditioning, intercom system, and a large double lock-up garage with storage space. There is also a resort style pool in the complex.
- Centrally located within a short walk to Castle Towers

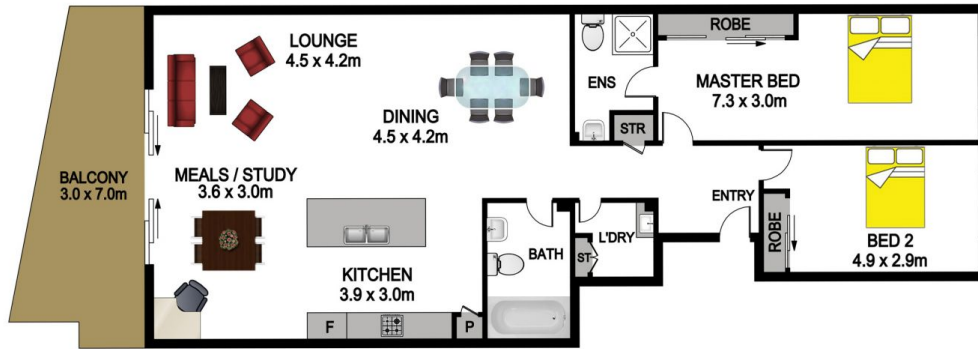
**Type** : Apartment

**View** : <https://www.gilmour.com.au/sale/nsw/hills/castle-hill/residential/apartment/5620743>



**Craig Alexis**  
02 9899 3311

[For full version visit the website](#)



## 6/33-39 CECIL AVENUE, CASTLE HILL

**DISCLAIMER**

PLANS SHOWN ARE FOR MARKETING PURPOSES ONLY. ALL DIMENSIONS ARE APPROXIMATE AND NOT TO SCALE. THEY ARE SUBJECT TO ERRORS AND INACCURACIES AND NO LIABILITY WILL BE ACCEPTED. INTERESTED PARTIES SHOULD MAKE THEIR OWN INQUIRES.

