






23/12-18 Sherwin Avenue CASTLE HILL NSW

2  2  2 

Looking for an immaculate and spacious 188sqm, first floor unit in a quiet street, with two bedrooms? This property has all that and more! Situated next to a park and within walking distance to shops, local schools and the M2 city bus.

- You will love the large living area and the gourmet Polyurethane and Caesarstone gas kitchen with stainless appliances. The high ceilings give you a sense of space and the ducted air conditioning makes the temperature pleasant all year round. The bedrooms are a generous size and the master has a walk in robe and an ensuite.
- It's a security block for peace of mind, there is also a great size auto double lock-up garage plus a separate lock-up storage area.
- Currently leased till 31/5/17 for \$520.00 per week to a

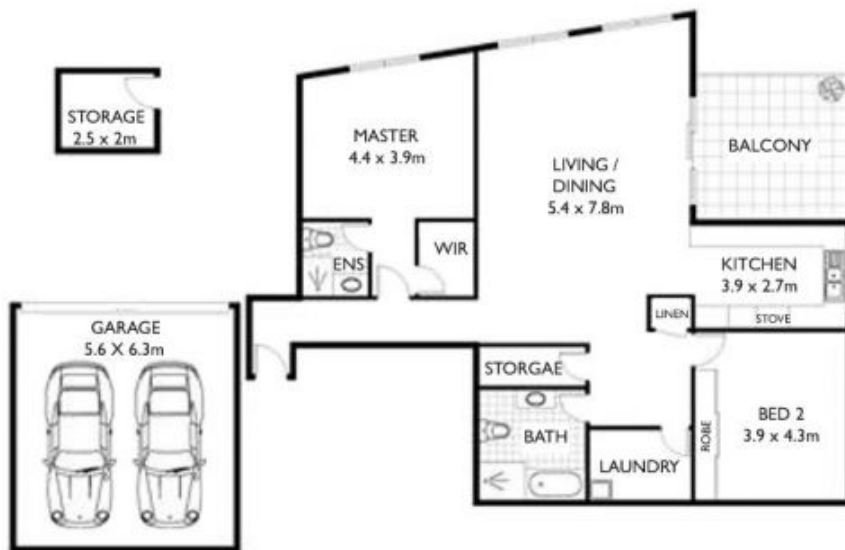
Type : Apartment

View : <https://www.gilmour.com.au/sale/nsw/hills/castle-hill/residential/apartment/5620735>



Craig Alexis
02 9899 3311

[For full version visit the website](#)



Please note: Dimensions are approximate. All information is gathered from a reliable source, however, we cannot guarantee its accuracy and interested parties should make their own enquiries.



23/12-18 SHERWIN AVENUE, CASTLE HILL NSW 2154