



4 Daphne Avenue CASTLE HILL NSW

4  4  2 

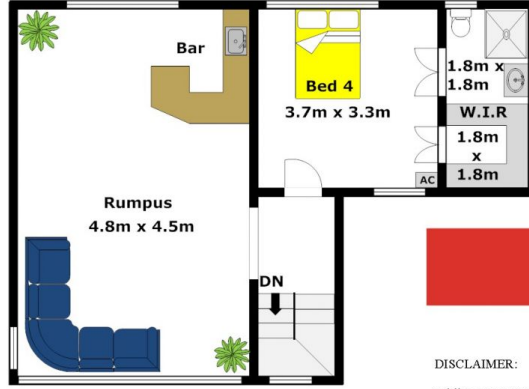
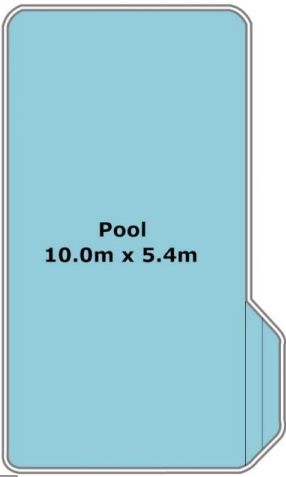
Positioned on the high side of a quiet street in the sought after Roxborough Park Estate and within the Excelsior Public catchment is this sizable family home. Offering four bedrooms, each with a built-in robe, and a total of three bathrooms including ensuites to two of the bedrooms. Plus there is a separate self-contained ground floor accommodation/granny flat which you can easily utilise as in-law/guest accommodation or a teenagers retreat. The main home is painted throughout and has new carpet, it also enjoys spacious living of a formal lounge room, a family/meals area off the updated kitchen and a large upstairs rumpus room complete with a bar. Cool off in the inviting in-ground pool and continue entertaining or relaxing from the BBQ area & yard that is overlooked by a covered deck. Other features include a double lock-up garage with an automatic door to one side, ceiling fans and a dishwasher. Close to popular schools such as Gilroy

Land Size : 758.8 sqm

View : <https://www.gilmour.com.au/sale/nsw/hills/castle-hill/residential/house/5620535>

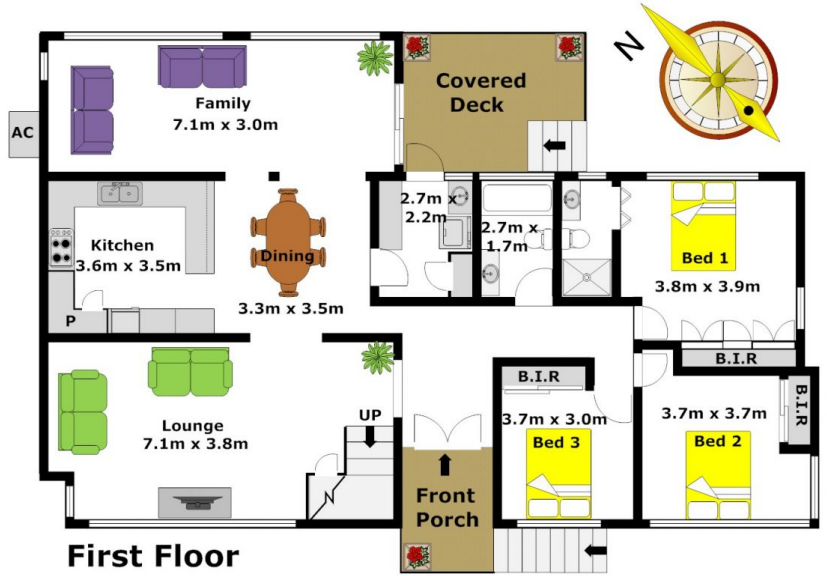
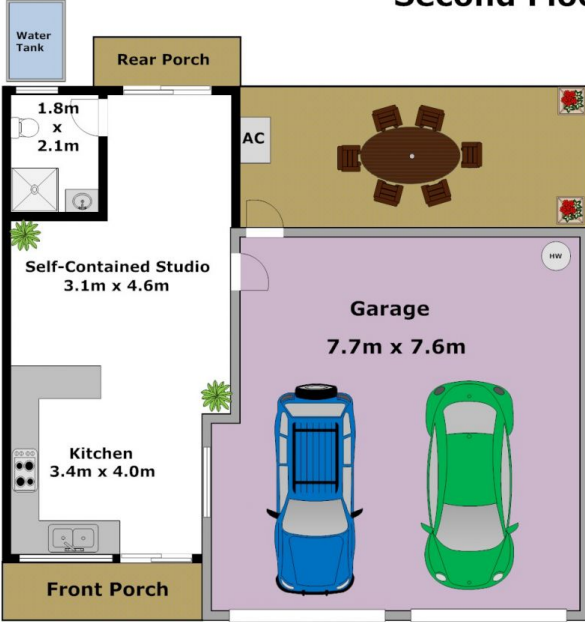


Gilmour Property Agents
02 9899 3311



DISCLAIMER:

Whilst every attempt has been made to ensure the accuracy of the floor plan contained here, no responsibility is taken for any error, omission, or misstatement. This floor plan is intended as a guide only, for representation purposes only, and should be used as such by any prospective purchaser. No guarantee or warranties can be given, and any person using this information should rely on their own enquiries.



Ground Floor

First Floor