



1/27-31 Windermere Avenue NORTHMEAD NSW

2 2 1

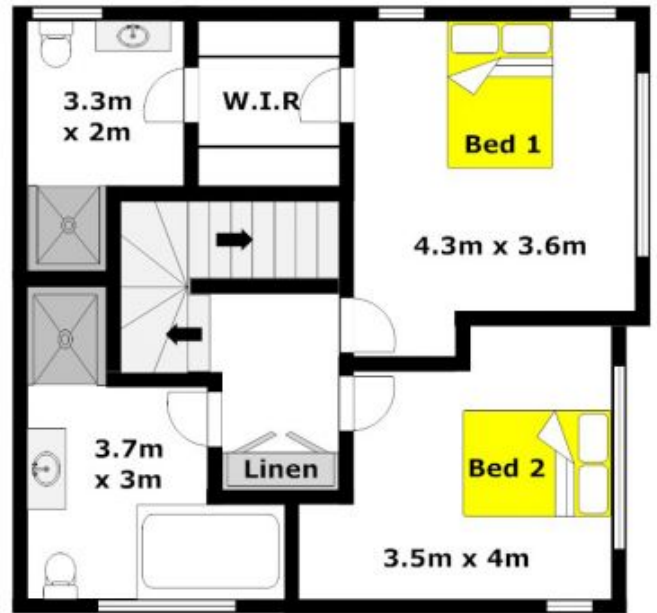
Boasting only one common wall is this light, bright & airy townhouse that is a fantastic opportunity for first home buyers, investors or those seeking a low maintenance lifestyle. Featuring easy level access and two large bedrooms, with the master bedroom completed by a walk through robe & an en-suite. The generous open plan living & dining area flows out to the sunny courtyard encouraging easy alfresco entertaining or even just simply sitting back and enjoying a private setting for breakfast. Whip up culinary masterpieces in the modern kitchen that comprises of granite bench tops, polyurethane cupboards and gas cooking. Finishing off the great features on offer here is the gas heating outlet, a large lock-up garage with internal access, an additional separate toilet downstairs and a spa bath to the main bathroom. Enjoy the benefit of being close

Type : Townhouse
Land Size : 167 sqm
View : <https://www.gilmour.com.au/sale/nsw/parra-matta/northmead/residential/townhouse/5620461>

[For full version visit the website](#)



Upper Level



Gilmour
PROPERTY AGENTS



DISCLAIMER:

Whilst every attempt has been made to ensure the accuracy of the floor plan contained here, no responsibility is taken for any error, omission, or misstatement. This floor plan is intended as a guide only, for representation purposes only, and should be used as such by any prospective purchaser. No guarantee or warranties can be given, and any person using this information should rely on their own enquiries.