



2/5 Rosewood Place CHERRYBROOK NSW

3 2 1

Looking for a brick & tile duplex in good condition that boasts a lovely north aspect to the generous, grassed backyard? Well here it is! The three bedrooms all have built-in wardrobes and the master bedroom also features an en-suite. There is generous living space comprising of a lounge & dining area and family/meals space off the functional kitchen. Ceiling fans & split air-conditioners help make the internal temperature pleasant all year round and a lovely balcony is ideal for taking in all the district views. With internal access to the lock up garage and there is a garden shed for all those bits & pieces. Close to all essential amenities such as shops, schools, parks and public transport including city & suburban bus routes. Inspect before it's going, going...gone!

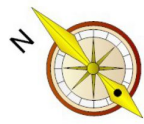
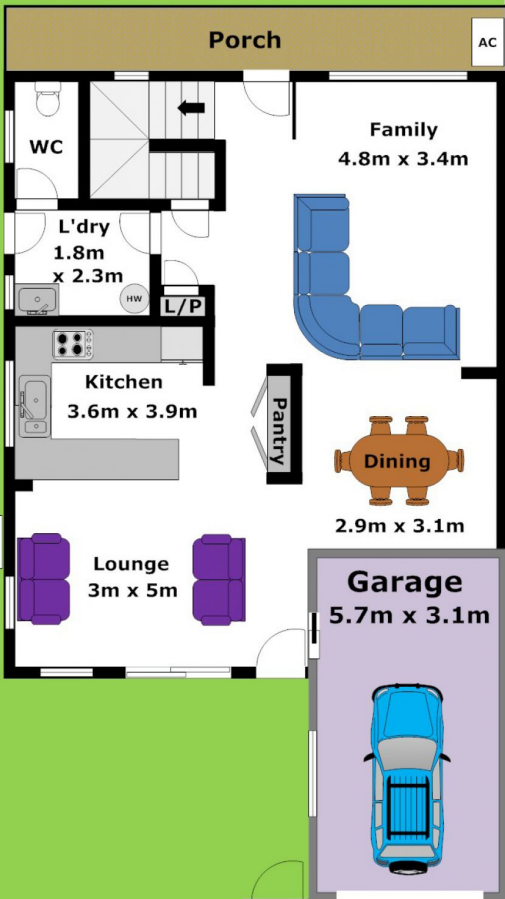
Type : Semi Detached
Land Size : 390 sqm
View : <https://www.gilmour.com.au/sale/nsw/hills/cerrybrook/residential/semi-detached/5620455>



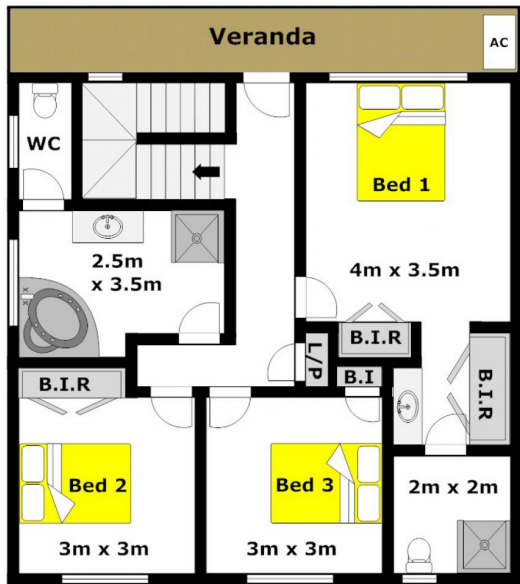
Craig Alexis
02 9899 3311



Ground Level



Upper Level



DISCLAIMER:

Whilst every attempt has been made to ensure the accuracy of the floor plan contained here, no responsibility is taken for any error, omission, or misstatement. This floor plan is intended as a guide only, for representation purposes only, and should be used as such by any prospective purchaser. No guarantee or warranties can be given, and any person using this information should rely on their own enquiries.