



**14307/177-219 Mitchell Road ERSKINEVILLE NSW**

1  1  1 

Extra large modern one bedroom apartment with study - 85m<sup>2</sup> - one of the biggest you'll see. Beautifully presented throughout it offers an enormous living room opening to a huge covered balcony with sunny east facing garden outlook.

- \* Full sized kitchen with stainless gas cook top & dishwasher.
- \* Double bedroom with a walk-in wardrobe & sliding door balcony access.
- \* Large separate study room with linen storage
- \* Fully tiled modern bathroom with internal laundry.
- \* Secure parking with lift access and storage cage.

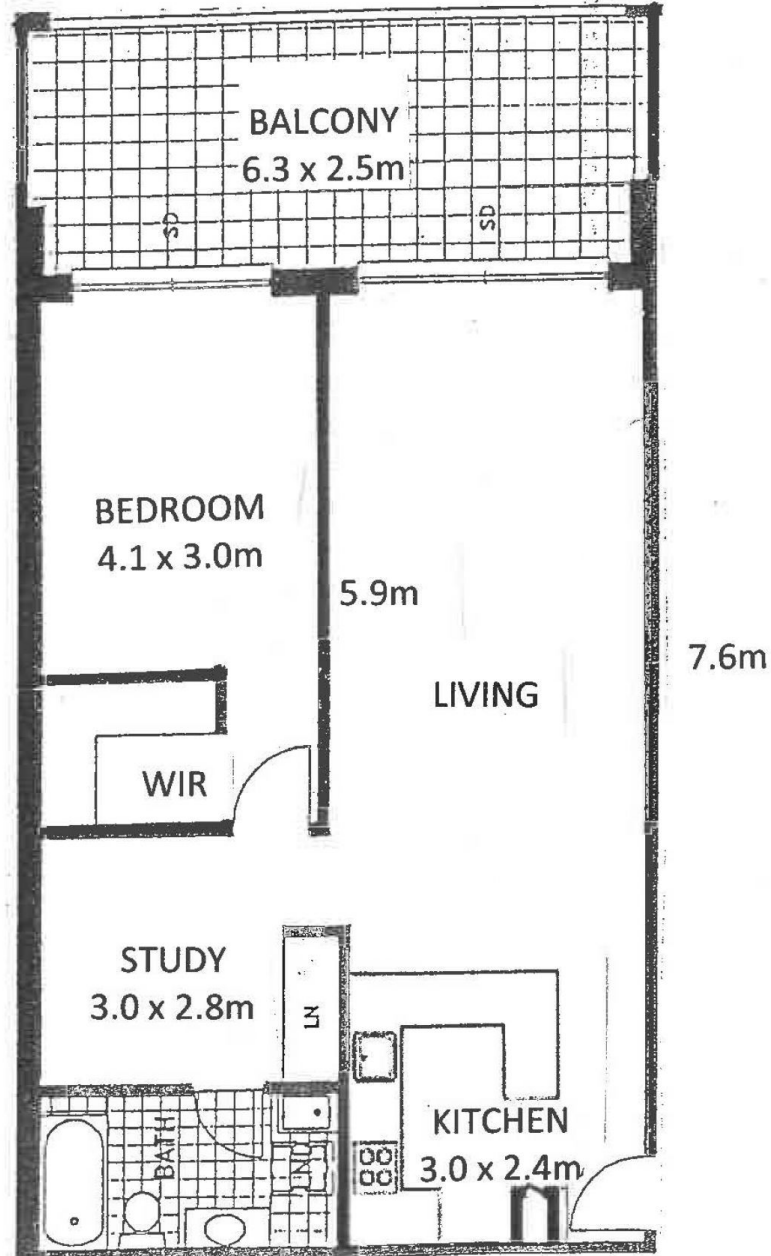
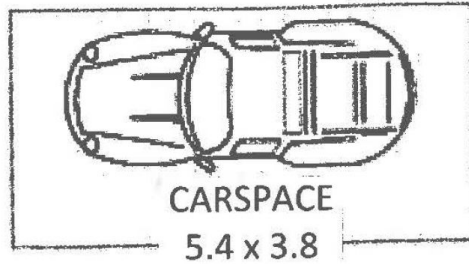
Sydney Park Village is an immaculate garden complex with

[For full version visit the website](https://www.gilmour.com.au)

**Type** : Apartment  
**Building Size** : 9 sqm  
**View** : <https://www.gilmour.com.au/sale/nsw/inner-west/erskineville/residential/apartment/5620424>



**Gilmour Property Agents**  
**02 9899 3311**



14307/177 – 219 MITCHELL ROAD

ERSKINEVILLE