



1 Cadman Crescent CASTLE HILL NSW

3  2  2 

Positioned in a tightly held, quiet area of Castle Hill is this family home on a fantastic 998.1sqm corner block that is waiting for its potential to be unlocked. Set a short stroll away from the future train station, this house is surrounded by quality homes and offers three bedrooms with built-ins and two original bathrooms. There is also a formal lounge & dining room, a family/rumpus room and a meals area adjoining the functional kitchen. Finishing off this potential filled package is the generous backyard, ducted air-conditioning and an automatic double lock-up garage with internal access. Close to shops, public transport including city bus, schools, Castle Towers, parks and cinemas. This is what opportunity looks like, don't miss out-call today!

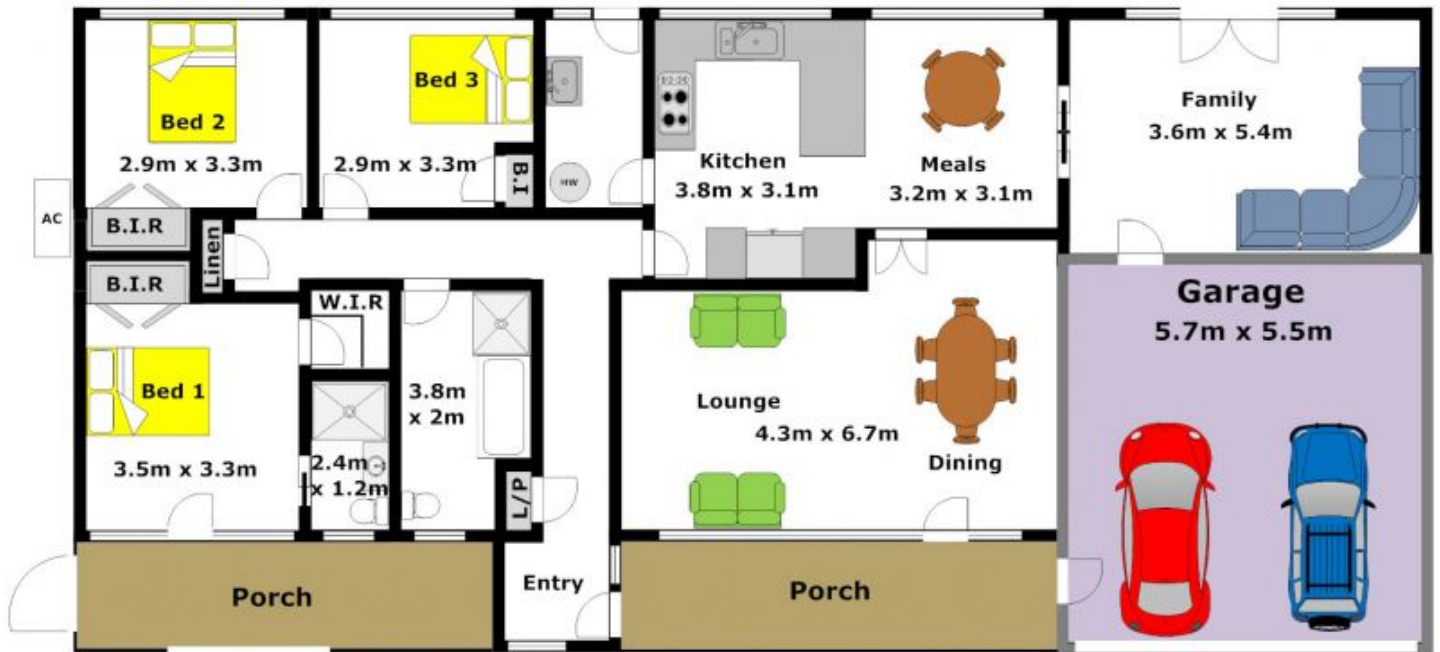
SOLD 3 April, 2014

[For full version visit the website](https://www.gilmour.com.au)

Type : House
Land Size : 998.1 sqm
View : <https://www.gilmour.com.au/sale/nsw/hills/castle-hill/residential/house/5620401>



Gilmour Property Agents
02 9899 3311



DISCLAIMER:

Whilst every attempt has been made to ensure the accuracy of the floor plan contained here, no responsibility is taken for any error, omission, or misstatement. This floor plan is intended as a guide only, for representation purposes only, and should be used as such by any prospective purchaser. No guarantee or warranties can be given, and any person using this information should rely on their own enquiries.

