






**43 Coolibah Street CASTLE HILL NSW**

5  3  2 

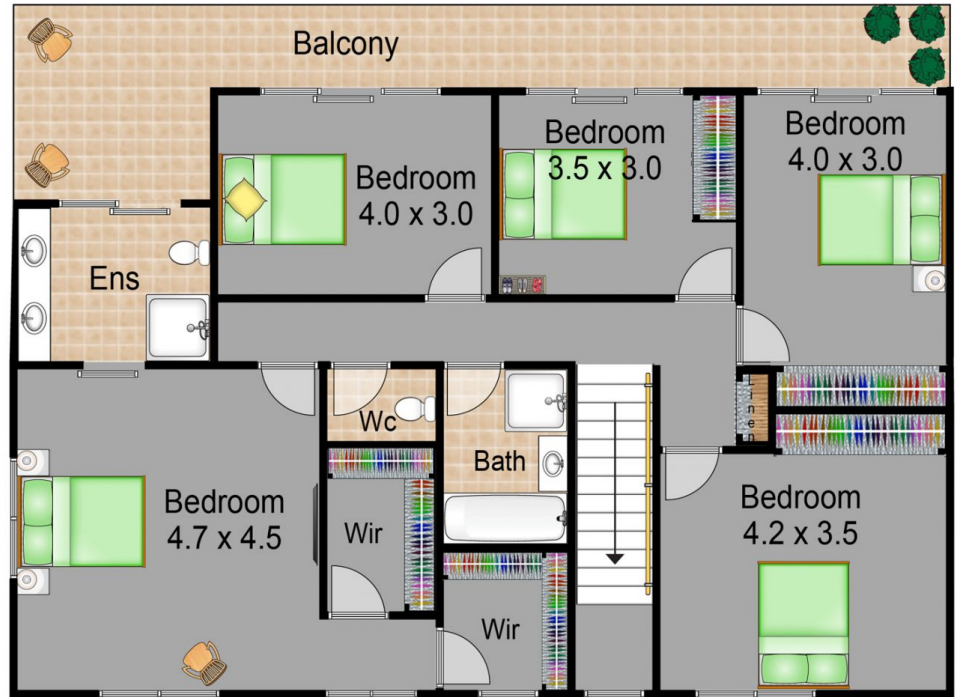
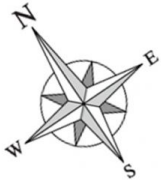
Located in a quiet, tree lined street that is only minutes to Castle Towers & the M2 bus, is this lovely family home that is sure to impress! Set on a 695.6sqm block and offering five bedrooms, there is balcony access to four of the bedrooms and the master bedroom is completed by en-suite & two walk-in robes. There is plenty of space for everyone to spread out and relax with the formal lounge & dining room leading out to the paved courtyard, a family/rumpus room and a meals area adjoining the kitchen with gas cooking. Enjoy the lovely north aspect from the covered entertaining deck that overlooks the private & tranquil grassed yard. Other great features include air-conditioning, storage, a wine cellar and a large double lock-up garage with a workshop & internal access. Close & convenient to all amenities including shops, restaurants,

**Type** : House  
**Land Size** : 695.6 sqm  
**View** : <https://www.gilmour.com.au/sale/nsw/hills/castle-hill/residential/house/5620386>

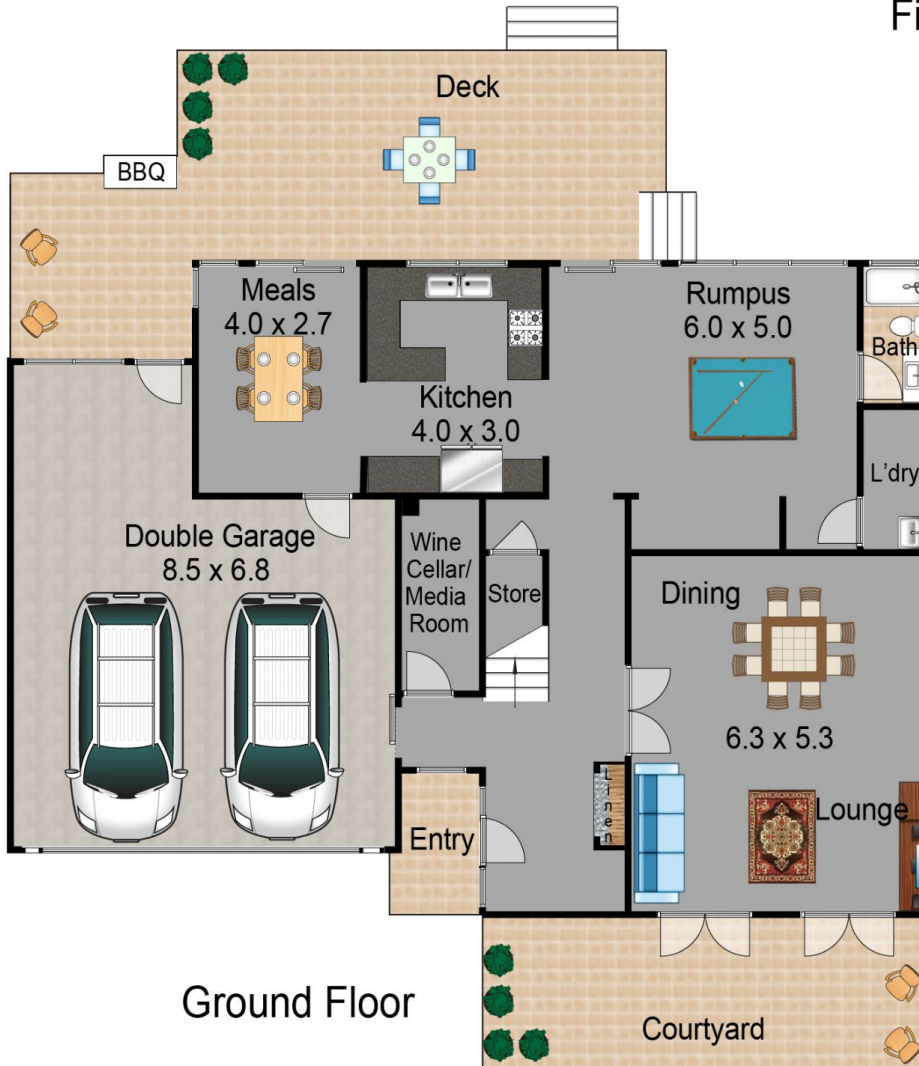


**Gilmour Property Agents**  
**02 9899 3311**

[For full version visit the website](#)



First Floor



Ground Floor

DISCLAIMER  
DIMENSIONS ARE APPROXIMATE AND SHOULD ONLY BE USED AS A GUIDE.  
THEY ARE NOT TO SCALE AND NO LIABILITY WILL BE ACCEPTED.



**Gilmour**  
PROPERTY AGENTS