



9 Lavender Avenue KELLYVILLE NSW

4  2  2 

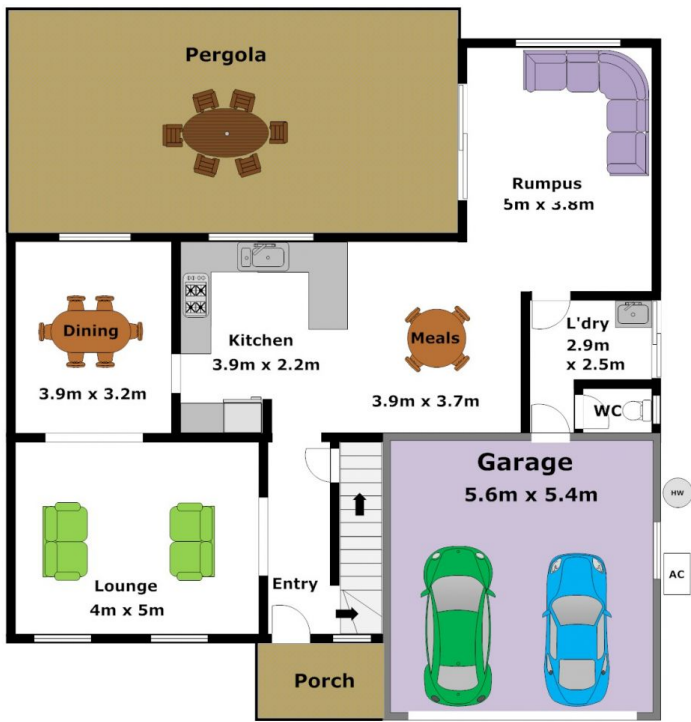
Set in a quiet, private avenue amongst other quality residences is this appealing family home that borders Castle Hill. Positioned on a low maintenance 520.6sqm block and boasting four bedrooms, three with built-in robes and the generous master suite features a walk-through robe & modern en-suite. There is inviting living areas consisting of a formal lounge & dining room, a rumpus and a meals area adjoining the large, contemporary kitchen with stainless steel appliances & gas cooking. Continue out to the covered entertaining area that overlooks the children playing in the large rear yard and there is a garden shed for those bits & pieces. With other great features of ducted air-conditioning, gas heating outlets, an additional separate toilet downstairs and a double lock-up garage with internal access This home provides all the elements for a relaxing,

Type : House
Land Size : 520.6 sqm
View : <https://www.gilmour.com.au/sale/nsw/hills/kellyville/residential/house/5620360>

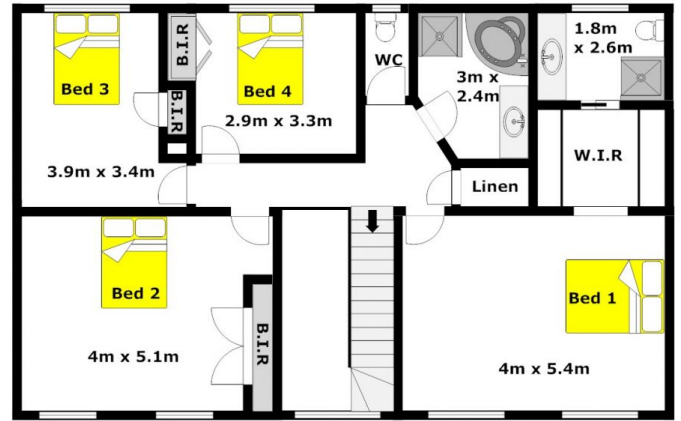


Gilmour Property Agents
02 9899 3311

[For full version visit the website](https://www.gilmour.com.au)



Upper Level



DISCLAIMER:

Whilst every attempt has been made to ensure the accuracy of the floor plan contained here, no responsibility is taken for any error, omission, or misstatement. This floor plan is intended as a guide only, for representation purposes only, and should be used as such by any prospective purchaser. No guarantee or warranties can be given, and any person using this information should rely on their own enquiries.