



59 Carinda Drive GLENHAVEN NSW

5 3 3

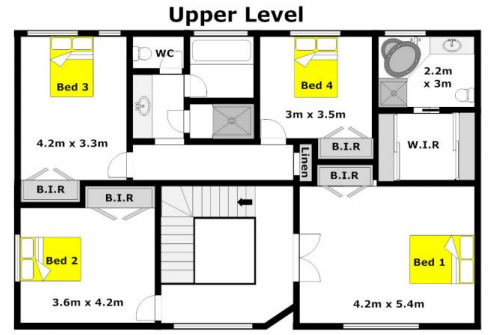
A magnificent achievement in size and grace is offered with this luxurious Meadowbank home of 50 squares, located on the high side of a beautiful & wide, tree lined street. Set on 1329sqm this home boasts five generous bedrooms one of which is located downstairs, there are built-in robes to all bedrooms and the huge master retreat also features an enviable en-suite complete with a spa bath. A welcoming foyer will lead your guests to sophisticated living areas of a formal lounge & dining room with a roaring fireplace, a separate study, a huge separate rumpus room and an open plan family/meals area adjoining the sizable granite kitchen with stainless steel appliances, walk-in pantry and the added benefit of overlooking the yard. The ultra private, sundrenched outdoor setting encourages you to relax, enjoy, entertain or indulge with the tranquil bush outlook, a

Type : House
Land Size : 1329 sqm
View : <https://www.gilmour.com.au/sale/nsw/hills/glenshaven/residential/house/5620318>

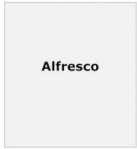


Gilmour Property Agents
02 9899 3311

[For full version visit the website](https://www.gilmour.com.au)



Gilmour
PROPERTY AGENTS



DISCLAIMER:
While every attempt has been made to ensure the accuracy of the floor plan contained herein, no responsibility is taken for any errors, omissions, or inaccuracies. This floor plan is intended as a guide only, for representation purposes only, and should be used as such by any prospective purchaser. No guarantee or warranty can be given, and any person using this information should rely on their own expertise.