



34 Copperleaf Way CASTLE HILL NSW

4  3  2 

This architecturally designed, executive home is enviably set in one of Castle Hill's best streets in the prestigious Castlewood Estate. Sitting on a generous & private 2,043sqm block in a quiet cul-de-sac with tranquil bush land views you will be immediately impressed.

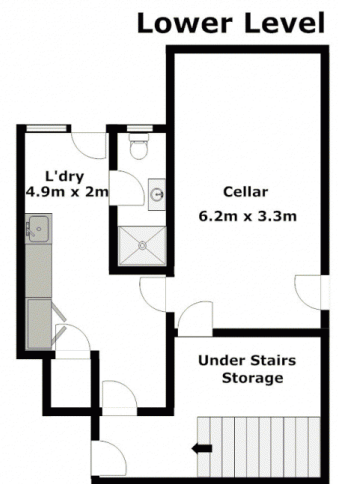
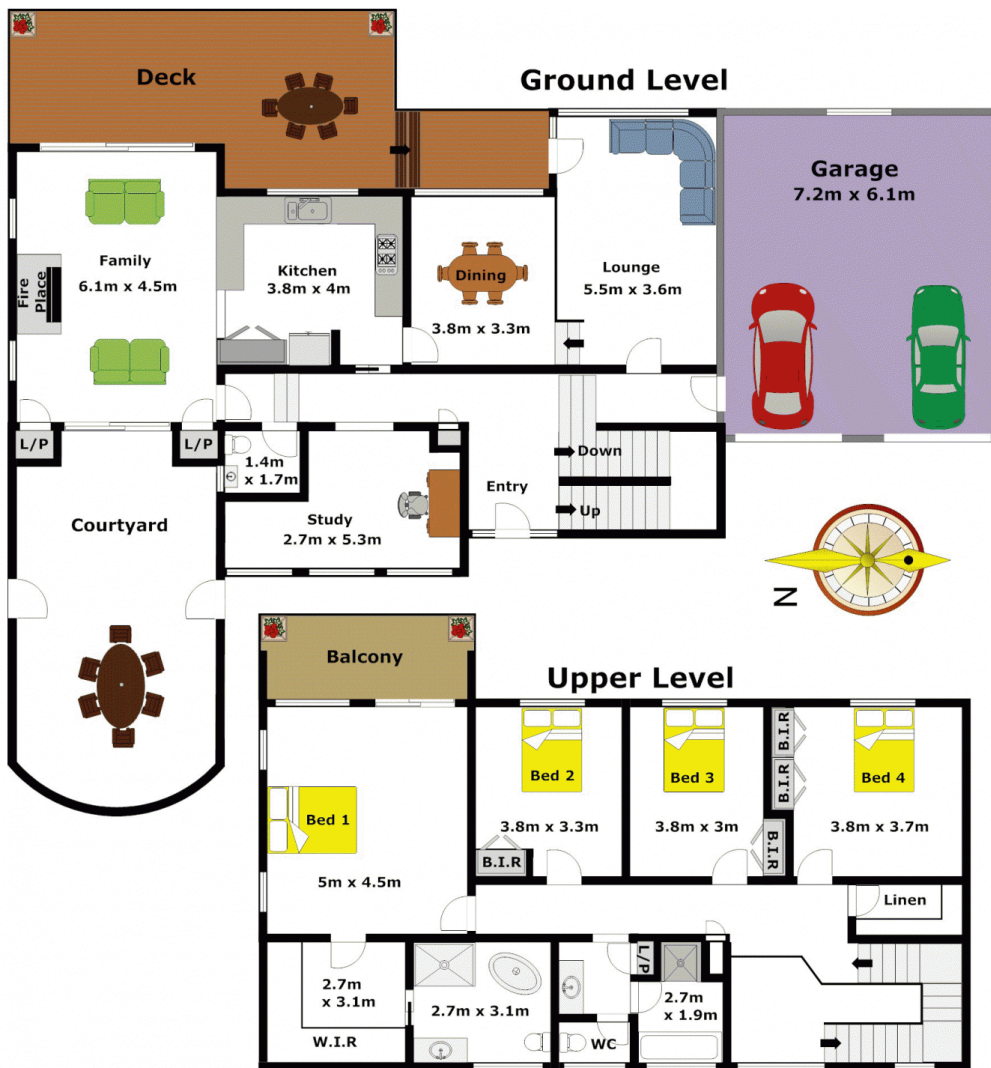
Boasting four generous bedrooms, with built-in wardrobes to three and the master retreat features a highly desirable dressing room/walk-in robe, a huge en-suite with a sunken bath and a private balcony. The highlight of this home is the spacious living areas of a formal dining room, a separate study, and a formal lounge room opening out to a large timber deck. There is also an inviting family/rumpus room with an open fireplace that flows out to the sundrenched, peaceful courtyard.

Type : House
Land Size : 2043 sqm
View : <https://www.gilmour.com.au/sale/nsw/hills/castle-hill/residential/house/5620302>



Gilmour Property Agents
02 9899 3311

[For full version visit the website](https://www.gilmour.com.au)



DISCLAIMER:

Whilst every attempt has been made to ensure the accuracy of the floor plan contained here, no responsibility is taken for any error, omission, or misstatement. This floor plan is intended as a guide only, for representation purposes only, and should be used as such by any prospective purchaser. No guarantee or warranties can be given, and any person using this information should rely on their own enquiries.