




22 Bordeaux Crescent CASTLE HILL NSW

5  3  3 

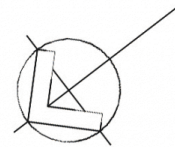
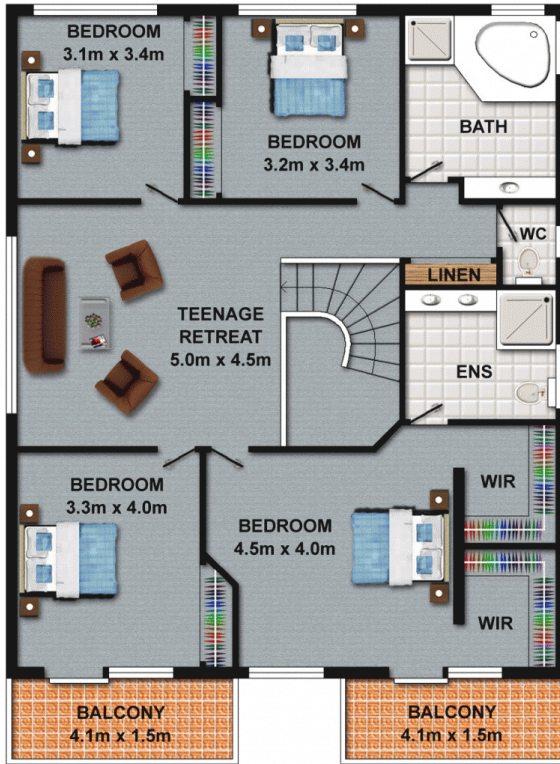
You will be instantly impressed by this one owner home that is 11 years old and sits on a level 660sqm block. Boasting 42.8 squares of stylish living and featuring five genuine bedrooms, with built-in wardrobes to four and the master retreat offers his & her walk-in robes, a balcony and an en-suite. The fifth bedroom is located on the ground floor and with its own bathroom it is ideal for in-laws or extended family that don't need to be burdened by using the stairs. An opportunity to enjoy a wealth of living space for the whole family with the formal lounge & dining room, a family room and a meals/conservatory area adjoining the spacious gas kitchen with 40mm granite bench tops. Teenagers & children will love their own space for their toys & gadgets with the separate rumpus room and upstairs retreat/TV area. The perfect environment for entertaining is

Type : House
Building Size : 43 sqm
Land Size : 660 sqm
View : <https://www.gilmour.com.au/sale/nsw/hills/castle-hill/residential/house/5620269>



Gilmour Property Agents
02 9899 3311

[For full version visit the website](https://www.gilmour.com.au)



FIRST FLOOR



ENTRY

GROUND FLOOR

DISCLAIMER
 DIMENSIONS ARE APPROXIMATE AND SHOULD ONLY BE USED AS A GUIDE
 THEY ARE NOT TO SCALE AND NO LIABILITY WILL BE ACCEPTED.