



CASTLE HILL

3  2  2 

Situated in the popular East Excelsior locale is this fantastic, 13 year old single level home on a low maintenance 636sqm block. Offering three bedrooms with mirrored built-in wardrobes to all and two bathrooms including the en-suite in the master bedroom. Cosy up by the slow combustion fireplace in the formal lounge & dining room and there is a family/meals area adjoining the contemporary kitchen. The covered alfresco area is a lovely setting for entertaining friends whilst keeping an eye on the children playing in the easy care, grassed & fenced yard. With other great features of a garden shed, attic storage, air-conditioning and an automatic double lock-up garage with internal access. Located in a very handy location close to schools and walking distance to Castle Towers & M2 city bus. This home has a lifetime of living to

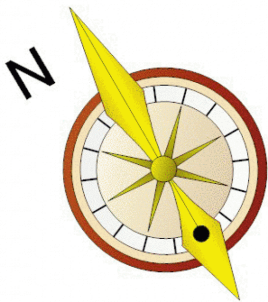
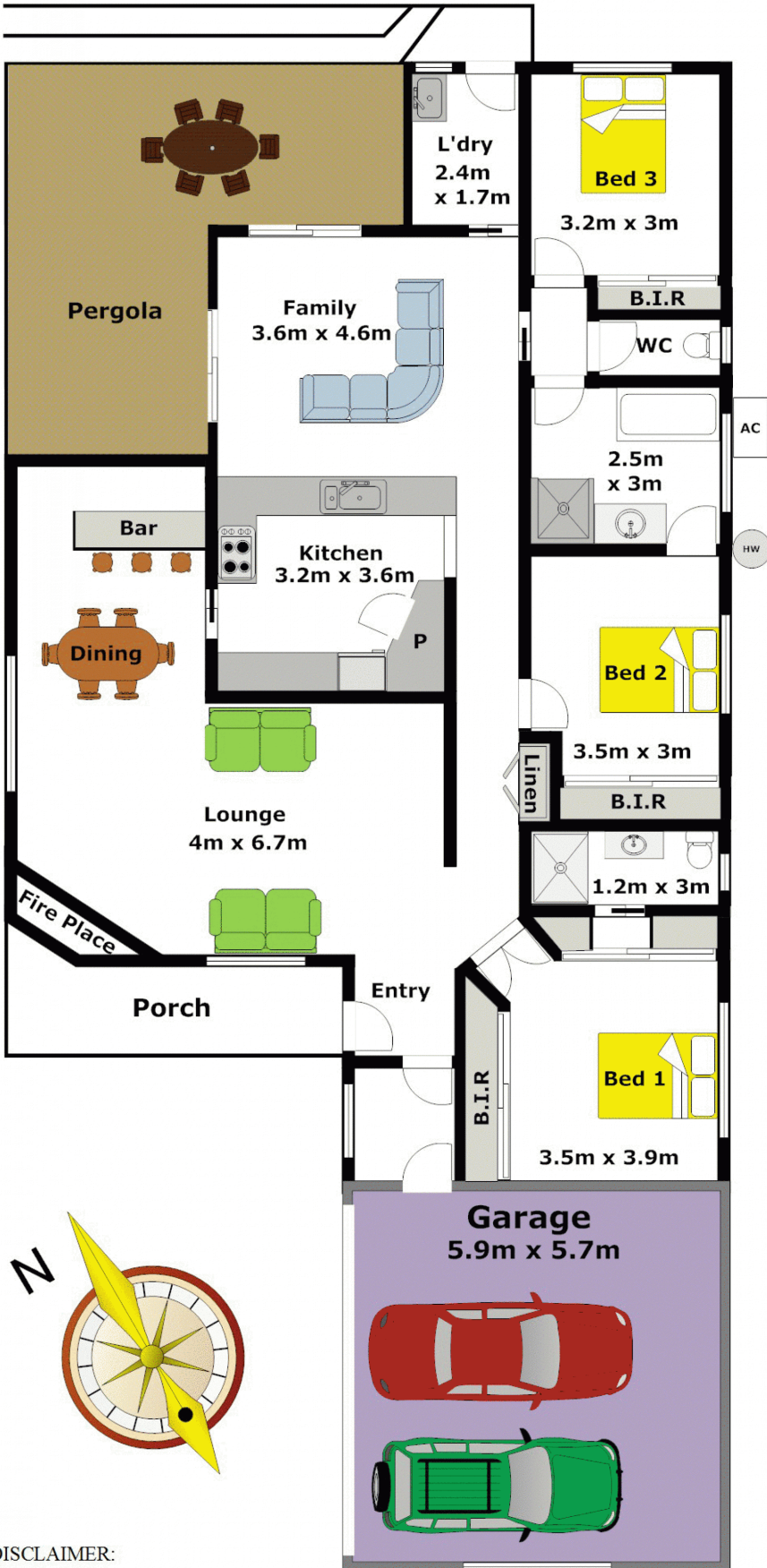
Type : House
Land Size : 636.1 sqm
View : <https://www.gilmour.com.au/sale/nsw/hills/castle-hill/residential/house/5620264>



Gilmour Property Agents
02 9899 3311

[For full version visit the website](https://www.gilmour.com.au)

- Garden
- Shed



DISCLAIMER:

Whilst every attempt has been made to ensure the accuracy of the floor plan contained here, no responsibility is taken for any error, omission, or misstatement. This floor plan is intended as a guide only, for representation purposes only, and should be used as such by any prospective purchaser. No guarantee or warranties can be given, and any person using this information should rely on their own enquiries.