



## CASTLE HILL

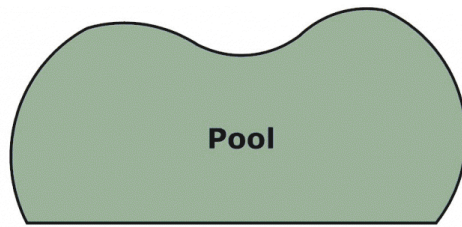
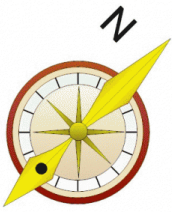
Located in the highly sought after East Excelsior estate and nestled at the end of a quiet cul-de-sac is this tri-level family home on 722sqm. Featuring four bedrooms and three bathrooms including two en-suites. With space for the family to relax in the lounge & dining room, a meals area off the functional kitchen and the massive fourth bedroom could easily be used as a rumpus/games room. Enjoy sitting out on the large timber deck that overlooks the kids playing in the sparkling in-ground pool and paved rear yard. There are 5 split air-conditioner units for temperature control and a double carport to take care of the cars. Close and convenient to Castle Towers, public transport including city bus, schools and local parks & reserves. A lovely and peaceful setting to live-inspect today!

4 3 2

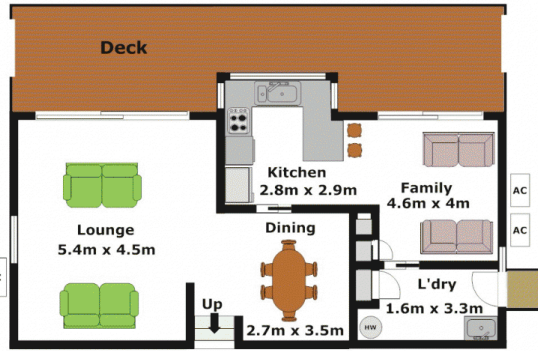
**Type** : House  
**Land Size** : 722 sqm  
**View** : <https://www.gilmour.com.au/sale/nsw/hills/castle-hill/residential/house/5620254>



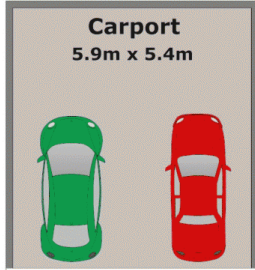
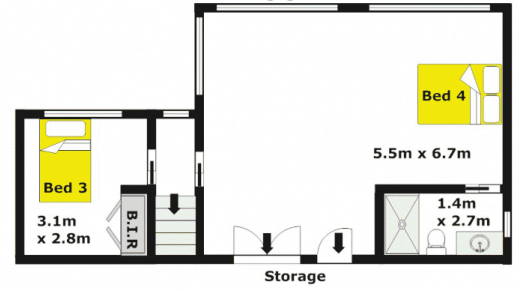
**Gilmour Property Agents**  
**02 9899 3311**



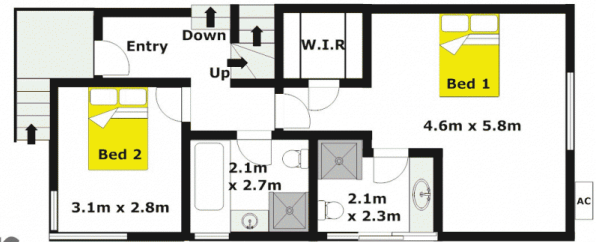
### Lower Level



### Upper Level



### Ground Level



**DISCLAIMER:**

Whilst every attempt has been made to ensure the accuracy of the floor plan contained here, no responsibility is taken for any error, omission, or misstatement. This floor plan is intended as a guide only, for representation purposes only, and should be used as such by any prospective purchaser. No guarantee or warranties can be given, and any person using this information should rely on their own enquiries.

