



## CASTLE HILL

3  2  1 

Looking for a single level & low maintenance property in the sought after AV Jennings estate of Excelsior Grove"? Well here it is! Featuring three bedrooms all with built-in wardrobes and the master bedroom boasts an en-suite. The gas kitchen flows into the dining area & lounge room and overlooks the lovely sunny yard with a perfect north aspect. Relax in the large covered entertaining area & all this

on a 522.7sqm easy care block. Air conditioned via two split systems, a single lock-up garage for the car and there are two tennis courts and BBQ facilities to enjoy in the estate. Nestled in a quiet setting that is minutes to excellent school, transport including city bus, parks and shops & cafes. Inspect today before it's gone!

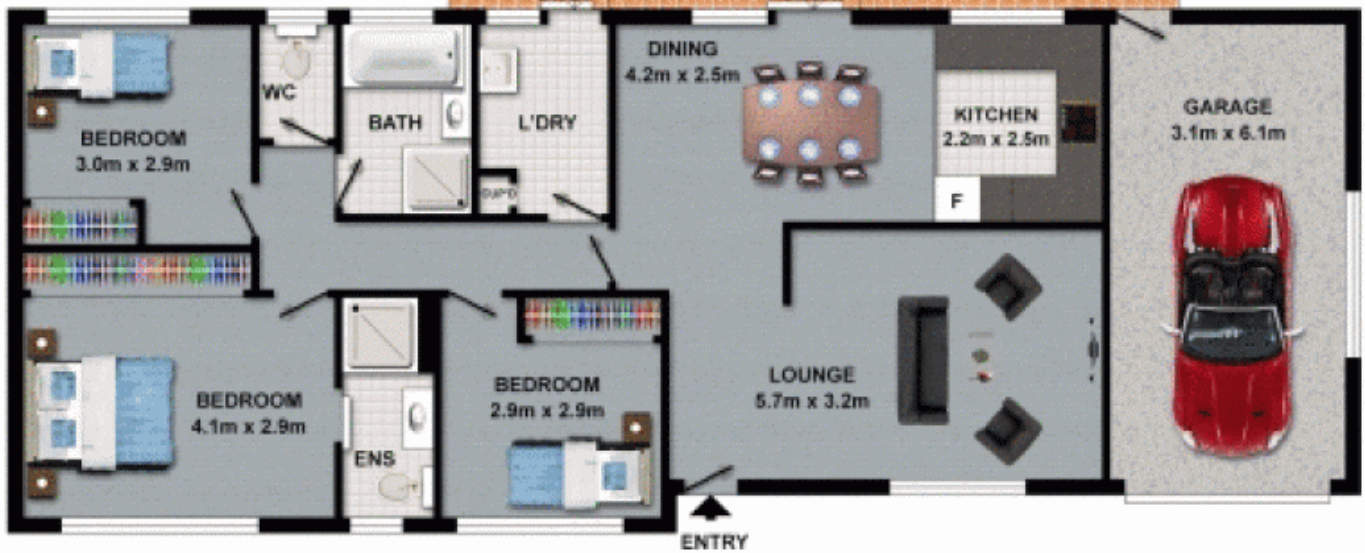
SOLD 2 April, 2013

[For full version visit the website](https://www.gilmour.com.au)

**Type** : Semi Detached  
**Land Size** : 522.7 sqm  
**View** : <https://www.gilmour.com.au/sale/nsw/hills/castle-hill/residential/semi-detached/5620249>



**Craig Alexis**  
02 9899 3311



**DISCLAIMER**  
DIMENSIONS ARE APPROXIMATE AND SHOULD ONLY BE USED AS A GUIDE.  
THEY ARE NOT TO SCALE AND NO LIABILITY WILL BE ACCEPTED.