



CASTLE HILL

5 2 2

Set on 756.6sqm in a quiet street in a popular locale is this fantastic family home. Boasting five generous bedrooms with built-in robes to three and a walk-in robe plus en-suite to the master bedroom. There is a formal lounge & dining room and a family/meals area adjoining the functional kitchen. Be simply amazed by the massive timber decking that shows off the tranquil bush views and also overlooks the resort style in-ground pool.

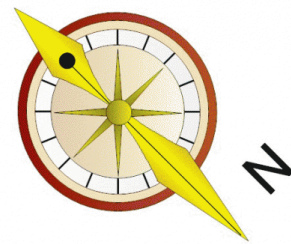
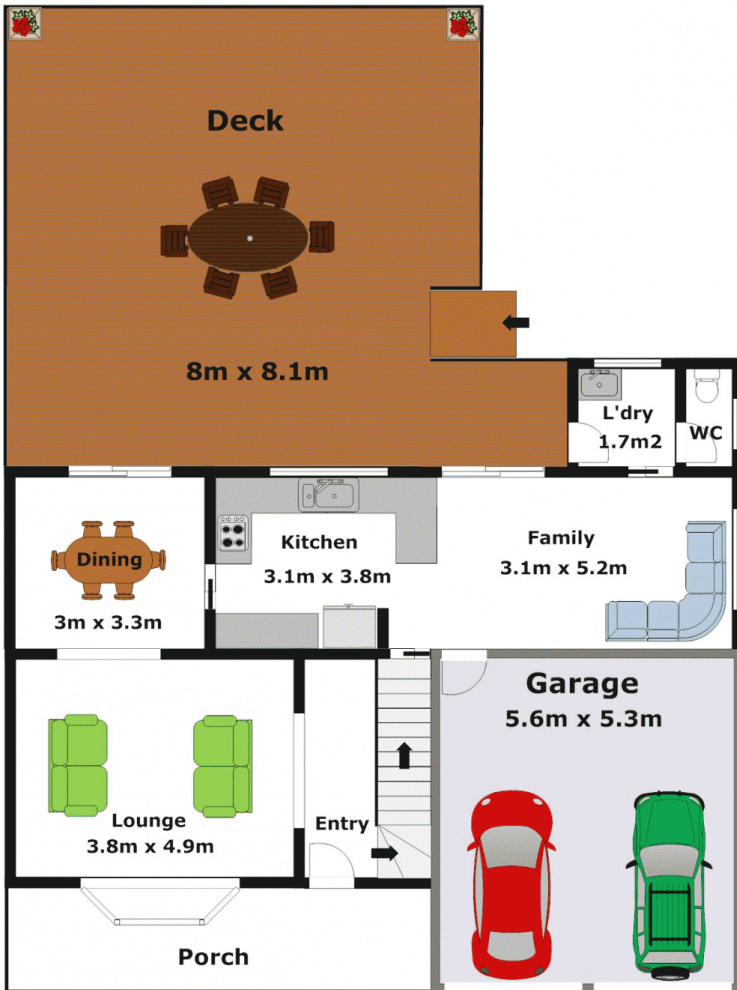
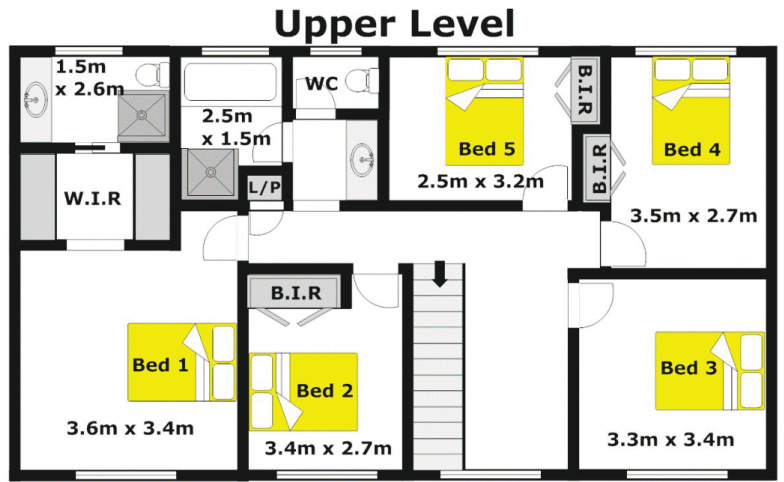
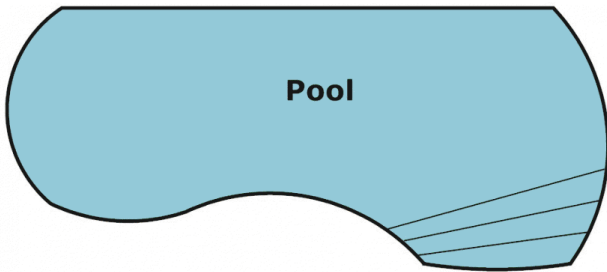
Other great features & inclusions of this home are the variety of fruit trees & vegetables, ducted air-conditioning, solar panels & Fronius converter for energy efficiency and a double lock-up garage with internal access. Conveniently close to Samuel Gilbert Public, parks, Knightsbridge shops and public transport—doesn't your family deserve this lifestyle? Inspect today!

Type : House
Land Size : 756.6 sqm
View : <https://www.gilmour.com.au/sale/nsw/hills/castle-hill/residential/house/5620235>



Gilmour Property Agents
02 9899 3311

[For full version visit the website](https://www.gilmour.com.au)



DISCLAIMER:

Whilst every attempt has been made to ensure the accuracy of the floor plan contained here, no responsibility is taken for any error, omission, or miss-statement. This floor plan is intended as a guide only, for representation purposes only, and should be used as such by any prospective purchaser. No guarantee or warranties can be given, and any person using this information should rely on their own enquires.