



## BAULKHAM HILLS

4  2  2 

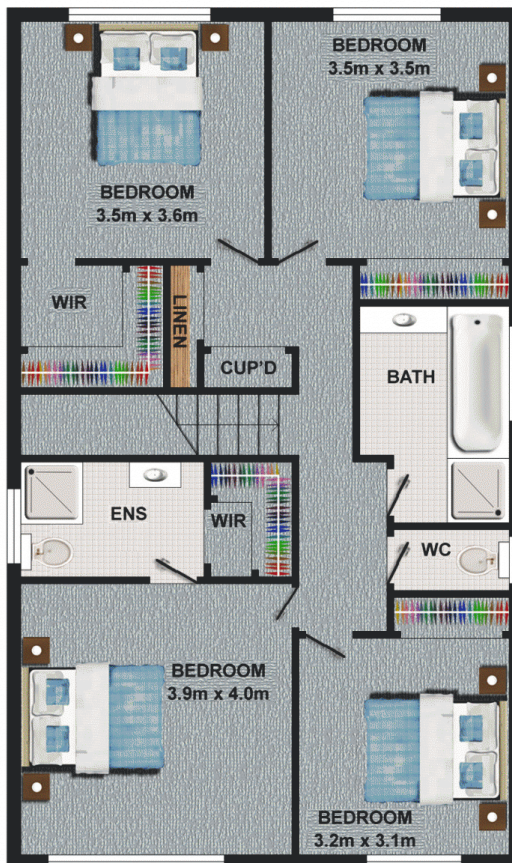
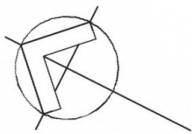
Located in a quiet position in the highly sought after Crestwood Estate in this lovely family home on the high side of a 736sqm block with charming views. Offering four spacious bedrooms with built-in robes to two, walk-in robes to the other two and an en-suite bathroom in the master bedroom. The home encourages relaxed & spacious family living with a formal lounge & dining room, meals/family room adjoining the large kitchen and a separate rumpus room. Your children will love playing in the generous grassed rear yard and the paved entertaining area provides a perfect setting for enjoying alfresco lunches & dinners. Other great features include a double lock-up garage with two automatic doors & internal access, ducted air-conditioning, additional separate toilet, alarm system and mains gas available. Convenient to all amenities

**Type** : House  
**Land Size** : 736 sqm  
**View** : <https://www.gilmour.com.au/sale/nsw/hills/baulkham-hills/residential/house/5620162>



**Gilmour Property Agents**  
**02 9899 3311**

[For full version visit the website](https://www.gilmour.com.au)



DISCLAIMER  
DIMENSIONS ARE APPROXIMATE AND SHOULD ONLY BE USED AS A GUIDE  
THEY ARE NOT TO SCALE AND NO LIABILITY WILL BE ACCEPTED.