



## CASTLE HILL

4 2 2

Sitting on a generous 929sqm block and backing a bush reserve & creek is this great family house waiting for your touch to make it a home. The split-level property is located in a quiet street in a popular area of Castle Hill and is in original condition but provides a great opportunity for your own renovation adventure. Offering four good size bedrooms plus a study with built-in robes to three and two bathrooms including an ensuite in the master bedroom. With a large living that features a fireplace and meals area off the kitchen looks out onto the verandah. The children will love playing in the huge grassed yard and you can keep an eye on them from the entertaining verandah. The home also features a double lock-up garage, additional separate toilet and ducted air-conditioning for temperature control. Close to all amenities including schools, shops, city

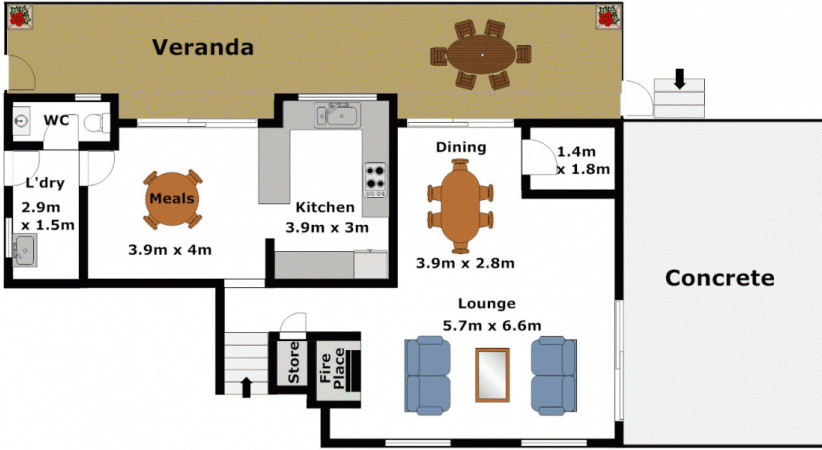
**Type** : House  
**Land Size** : 929 sqm  
**View** : <https://www.gilmour.com.au/sale/nsw/hills/castle-hill/residential/house/5620123>



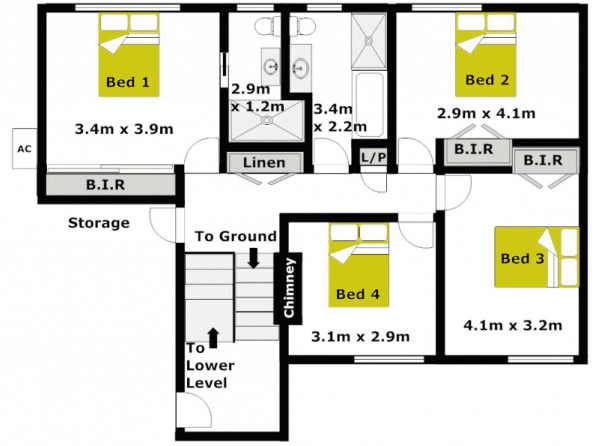
**Gilmour Property Agents**  
**02 9899 3311**

[For full version visit the website](https://www.gilmour.com.au)

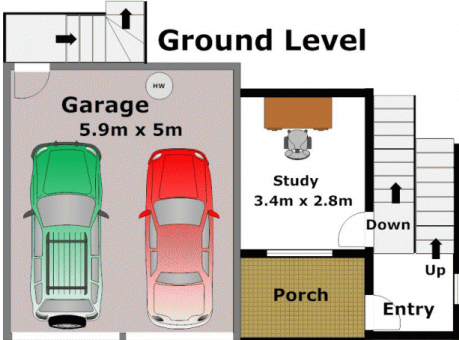
### Lower Level



### Upper level



### Ground Level



DISCLAIMER:

Whilst every attempt has been made to ensure the accuracy of the floor plan contained here, no responsibility is taken for any error, omission, or misstatement. This floor plan is intended as a guide only, for representation purposes only, and should be used as such by any prospective purchaser. No guarantee or warranties can be given, and any person using this information should rely on their own enquires.