



CASTLE HILL

5 🛏 3 🚿 2 🚗

This lovely family home in an ultra quiet cul-de-sac is being offered by the original owners for the first time in over 37 years. Set on a massive private 1056sqm block which sides onto natural permanent bush land and offers four-five bedrooms and three bathrooms including two ensuites. With a large lounge area that features a fireplace for cozy winter evenings and dining/living area adjoining the kitchen. The large separate studio could function as a teenagers retreat, potential in-law accommodation or home office opportunity. Cool off in summer in the sparkling pool and a large grassed yard for the kids to run around in. The double carport can easily be converted into a garage and convenient to all amenities including schools, shops and public transport.

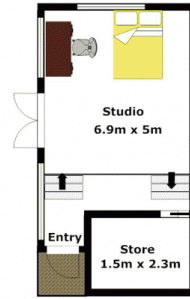
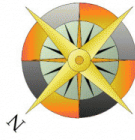
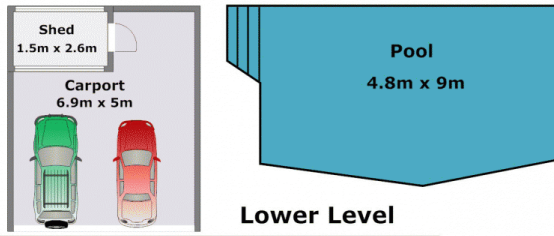
SOLOD 16th September, 2011

[For full version visit the website](https://www.gilmour.com.au/sale/nsw/hills/castle-hill/residential/house/5620053)

Type : House
Land Size : 1056 sqm
View : <https://www.gilmour.com.au/sale/nsw/hills/castle-hill/residential/house/5620053>



Gilmour Property Agents
02 9899 3311

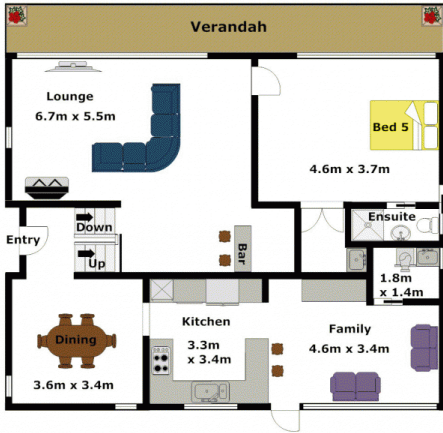


APPROXIMATE LOWER LEVEL FLOOR AREA: 132m² (14sq)
 APPROXIMATE UPPER LEVEL FLOOR AREA: 72m² (8sq)
 APPROXIMATE STUDIO FLOOR AREA: 30m² (3sq)

APPROXIMATE INTERNAL FLOOR AREA: 234m² (25sq)

DISCLAIMER:

Whilst every attempt has been made to ensure the accuracy of the floor plan contained here, no responsibility is taken for any error, omission, or misstatement. This floor plan is intended as a guide only, for representation purposes only, and should be used as such by any prospective purchaser. No guarantee or warranties can be given, and any person using this information should rely on their own enquires.



Upper Level

