



## BAULKHAM HILLS

3  2  2 

This lovely family home on a large 822sqm block is located on the high side of a quiet cul-de-sac in the sought after Crestwood Estate. Offering three bedrooms plus study, with a walk-in robe and en-suite to the master bedroom. The polished floorboards compliment the contemporary design & the living areas that include a lounge & dining room and family room. Continue outside to the paved & covered entertaining area that looks out onto the large grassed and fenced yard or even relax with a drink in hand on the front deck. The ducted air-conditioning and a split system provides temperature control and automatic double lock-up garage with internal access. Situated in close proximity to the local primary & high schools, local shops, parks and transport.

SOLD 27 September, 2011

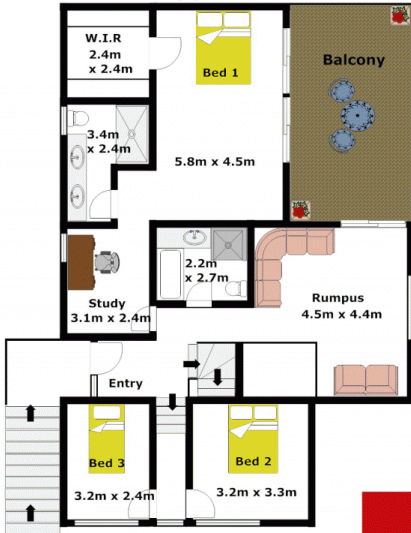
[For full version visit the website](https://www.gilmour.com.au)

**Type** : House  
**Land Size** : 822 sqm  
**View** : <https://www.gilmour.com.au/sale/nsw/hills/baulkham-hills/residential/house/5620047>

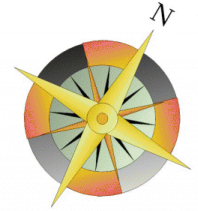
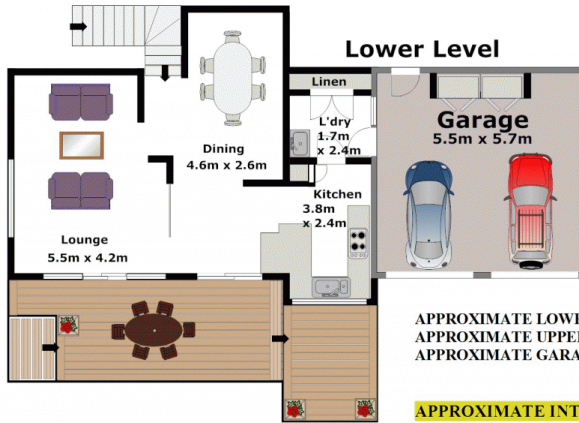


**Gilmour Property Agents**  
**02 9899 3311**

### Upper Level



### Lower Level



APPROXIMATE LOWER LEVEL FLOOR AREA: 58m<sup>2</sup> (6sq)  
 APPROXIMATE UPPER LEVEL FLOOR AREA: 98m<sup>2</sup> (11sq)  
 APPROXIMATE GARAGE FLOOR AREA: 31m<sup>2</sup> (3sq)

**APPROXIMATE INTERNAL FLOOR AREA: 187m<sup>2</sup> (20sq)**

**DISCLAIMER:**

Whilst every attempt has been made to ensure the accuracy of the floor plan contained here, no responsibility is taken for any error, omission, or misstatement. This floor plan is intended as a guide only, for representation purposes only, and should be used as such by any prospective purchaser. No guarantee or warranties can be given, and any person using this information should rely on their own enquires.

