

BELLA VISTA

4 3 2

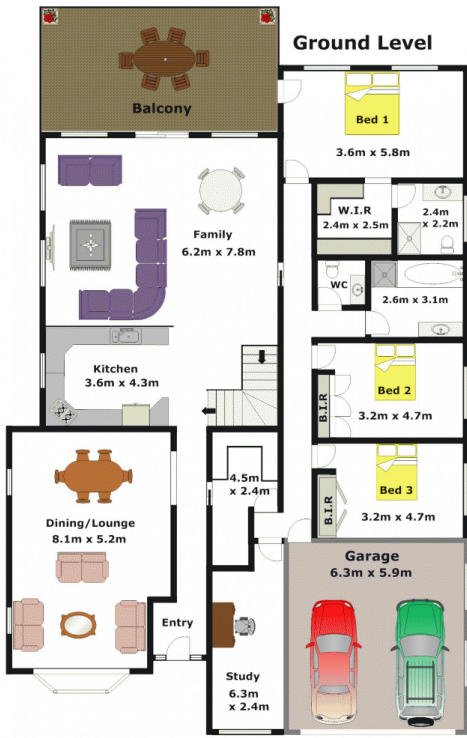
Located within a short stroll to Matthew Pearce school this home is very deceptive from the street with a huge interior for the growing family! Boasting four bedrooms with built-in wardrobes and an ensuite plus walk-in robe to the master bedroom. Your whole family can spread out and relax in the vast living areas that include a spacious formal lounge & dining room and adjoining the gas kitchen is the large meals/open plan family room featuring mains gas connection. Continue downstairs via the internal staircase to the home cinema area that was previously two bedrooms and with the ideal potential for in-law accommodation with the laundry & third bathroom adjoining. The sparkling modern in-ground pool with frameless fencing is overlooked by the alfresco entertainment areas on the upper and lower levels. The

Type : House
Price : \$ 849,000
Land Size : 760 sqm
View : <https://www.gilmour.com.au/sale/nsw/hills/bella-vista/residential/house/5620045>



Gilmour Property Agents
02 9899 3311

[For full version visit the website](https://www.gilmour.com.au)



APPROXIMATE LOWER LEVEL FLOOR AREA: 196m² (21sq)
 APPROXIMATE GROUND LEVEL FLOOR AREA: 248m² (27sq)
 APPROXIMATE GARAGE FLOOR AREA: 37m² (4sq)

APPROXIMATE INTERNAL FLOOR AREA: 481m² (52sq)

DISCLAIMER:

Whilst every attempt has been made to ensure the accuracy of the floor plan contained here, no responsibility is taken for any error, omission, or misstatement. This floor plan is intended as a guide only, for representation purposes only, and should be used as such by any prospective purchaser. No guarantee or warranties can be given, and any person using this information should rely on their own enquires.

