



KELLYVILLE

3  2  2 

Situated in the Kellyville village area and part of a quiet complex with a park next door is this lovely modern freestanding townhouse. Offering three bedrooms with built-in wardrobes to all and two bathrooms including the ensuite in the master. Spacious lounge & dining area adjoins the well appointed open plan kitchen. The living areas open out to the private and secure courtyard with grassed area-ideal for outdoor entertaining. With a double lock-up garage with internal access, additional separate toilet and no common shared wall-this property is a must see!
SOLD 8th August, 2011

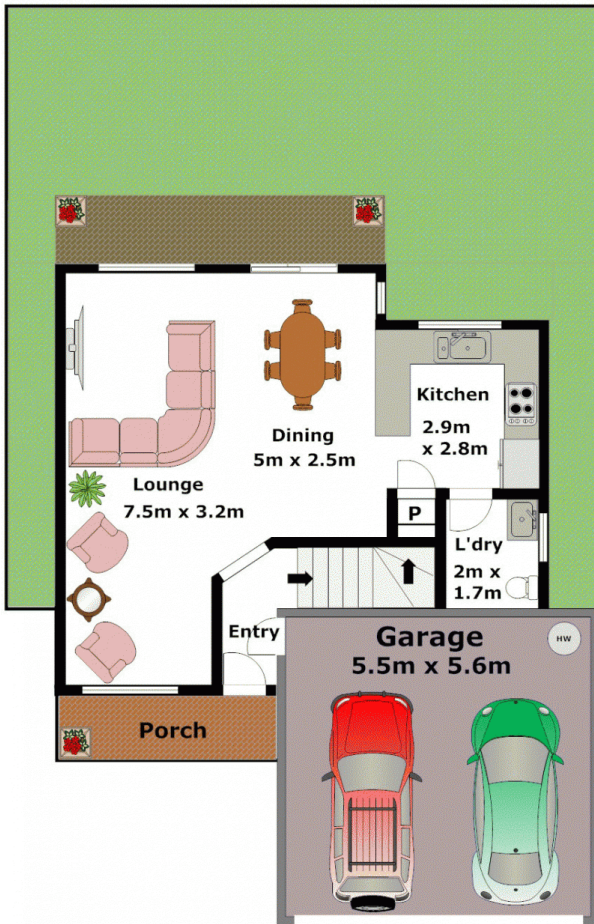
Type : Townhouse

View : <https://www.gilmour.com.au/sale/nsw/hills/kellyville/residential/townhouse/5620041>

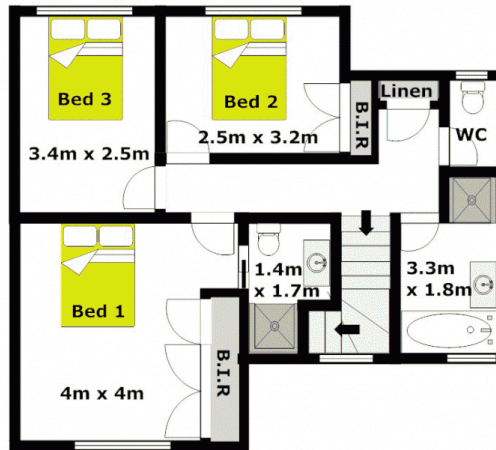


Gilmour Property Agents
02 9899 3311

Lower Level



Upper Level



APPROXIMATE LOWER LEVEL FLOOR AREA: 53m² (6sq)
 APPROXIMATE UPPER LEVEL FLOOR AREA: 56m² (6sq)
 APPROXIMATE GARAGE FLOOR AREA: 31m² (3sq)

APPROXIMATE INTERNAL FLOOR AREA: 140m² (15sq)

DISCLAIMER:

Whilst every attempt has been made to ensure the accuracy of the floor plan contained here, no responsibility is taken for any error, omission, or misstatement. This floor plan is intended as a guide only, for representation purposes only, and should be used as such by any prospective purchaser. No guarantee or warranties can be given, and any person using this information should rely on their own enquires.

