



GLENHAVEN

4  2  2 

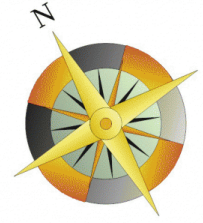
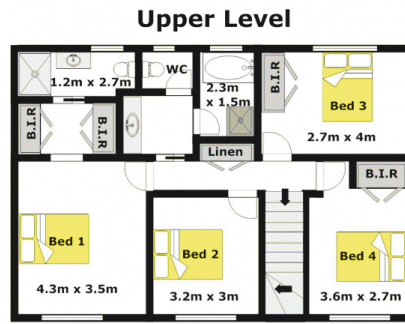
Welcome your family to this good sized home situated in the desirable Samuel Gilbert catchment area on a large 866sqm block. Offering four bedrooms plus study, with built-in wardrobes and the master bedroom boasts a walk-in robe & ensuite. Living areas for all the family include a formal lounge & dining, separate rumpus room and meals/family room adjoining the gas kitchen. The large grassed private rear yard with in-ground pool will keep the children occupied and the adults can look on from the undercover paved area. Also featuring a separate toilet & shower downstairs, air-conditioning and double lock-up garage with internal access. This home is walking distance to Samuel Gilbert Primary School, public transport, local shops and amenities plus the local parks and playing fields are minutes away.

Type : House
Land Size : 866 sqm
View : <https://www.gilmour.com.au/sale/nsw/hills/gl-enhaven/residential/house/5620040>



Gilmour Property Agents
02 9899 3311

[For full version visit the website](https://www.gilmour.com.au)



APPROXIMATE LOWER LEVEL FLOOR AREA: 103m² (11sq)
 APPROXIMATE UPPER LEVEL FLOOR AREA: 70m² (8sq)
 APPROXIMATE GARAGE FLOOR AREA: 30m² (3sq)

APPROXIMATE INTERNAL FLOOR AREA: 203m² (22sq)

DISCLAIMER:

Whilst every attempt has been made to ensure the accuracy of the floor plan contained here, no responsibility is taken for any error, omission, or misstatement. This floor plan is intended as a guide only, for representation purposes only, and should be used as such by any prospective purchaser. No guarantee or warranties can be given, and any person using this information should rely on their own enquiries.

