



CASTLE HILL

3  2  2 

A townhouse in the heart of Castle Hill is a fantastic opportunity for astute buyers and investors alike. Offering three good size bedrooms with built-in wardrobes to two and a walk-in robe, ceiling fan & ensuite in the master bedroom. The family/living area and meals space adjoins the open plan kitchen with gas cooking. Continue out to the paved outdoor entertainment area with easy to maintain courtyard for those alfresco summer barbeques. Other great features include automatic double lock-up garage, additional separate toilet and ducted air-conditioning. Currently leased for \$465.00 per week. Situated in a quiet complex with plenty of visitor parking and convenient to all amenities including Castle Towers, restaurants, cinemas, transport, library and schools- be quick with this one!

SOLD 5 October, 2011

[For full version visit the website](https://www.gilmour.com.au/sale/nsw/hills/castle-hill/residential/townhouse/5620039)

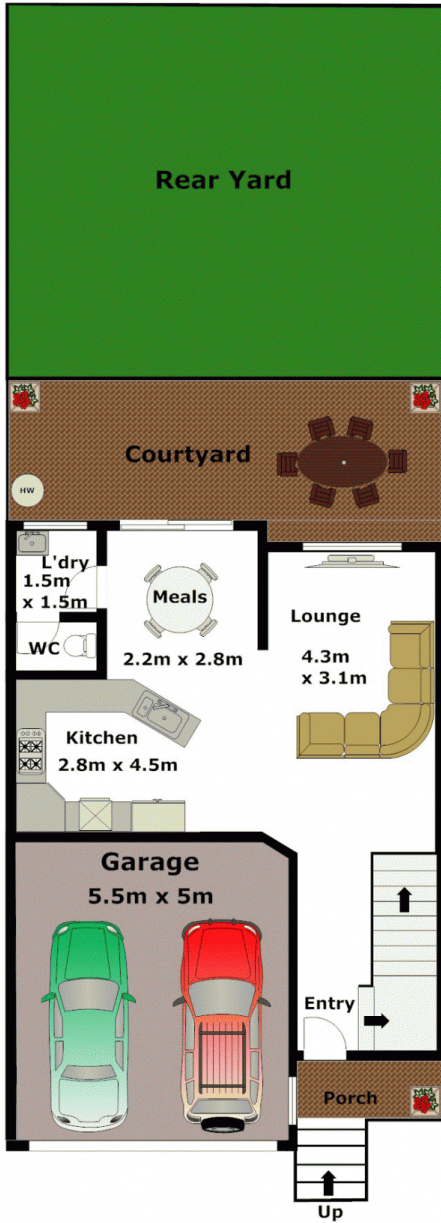
Type : Townhouse

View : <https://www.gilmour.com.au/sale/nsw/hills/castle-hill/residential/townhouse/5620039>

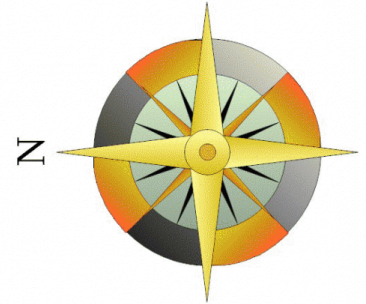
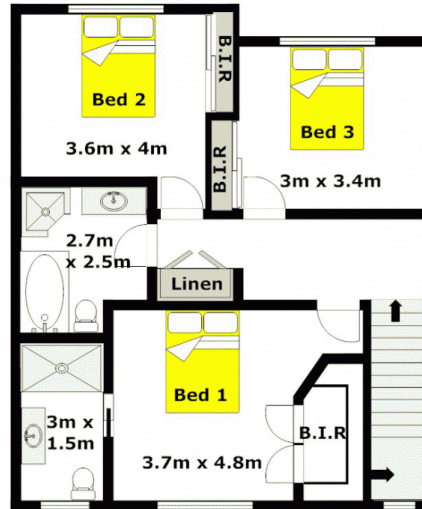


Gilmour Property Agents
02 9899 3311

Lower Level



Upper Level



APPROXIMATE LOWER LEVEL FLOOR AREA: 49m² (5sq)
APPROXIMATE UPPER LEVEL FLOOR AREA: 67m² (7sq)
APPROXIMATE GARAGE FLOOR AREA: 28m² (3sq)

APPROXIMATE INTERNAL FLOOR AREA: 144m² (15sq)

DISCLAIMER:

Whilst every attempt has been made to ensure the accuracy of the floor plan contained here, no responsibility is taken for any error, omission, or misstatement. This floor plan is intended as a guide only, for representation purposes only, and should be used as such by any prospective purchaser. No guarantee or warranties can be given, and any person using this information should rely on their own enquires.

