



## NORTHMEAD

3 2 2

Located in the rear of a small boutique complex of 8 is this spacious townhouse with full brick construction downstairs. Offering three massive bedrooms with walk-in wardrobe & ensuite to the master and two bathrooms plus additional separate toilet. Open & airy in design with open plan living areas that benefit from the north sun and upstairs teenagers retreat/study area. Granite kitchen with gas cooking is perfect for whipping up the culinary masterpieces and the fully landscaped rear courtyard with loads of natural sunlight plus spacious rear entertainment timber deck is ideal for those relaxing gatherings with friends. Other features include suspended concrete flooring & staircase, two split air-conditioning units and low strata fees of \$550 per quarter. A great place to live which takes advantage of being within close proximity to public

**Type** : Townhouse

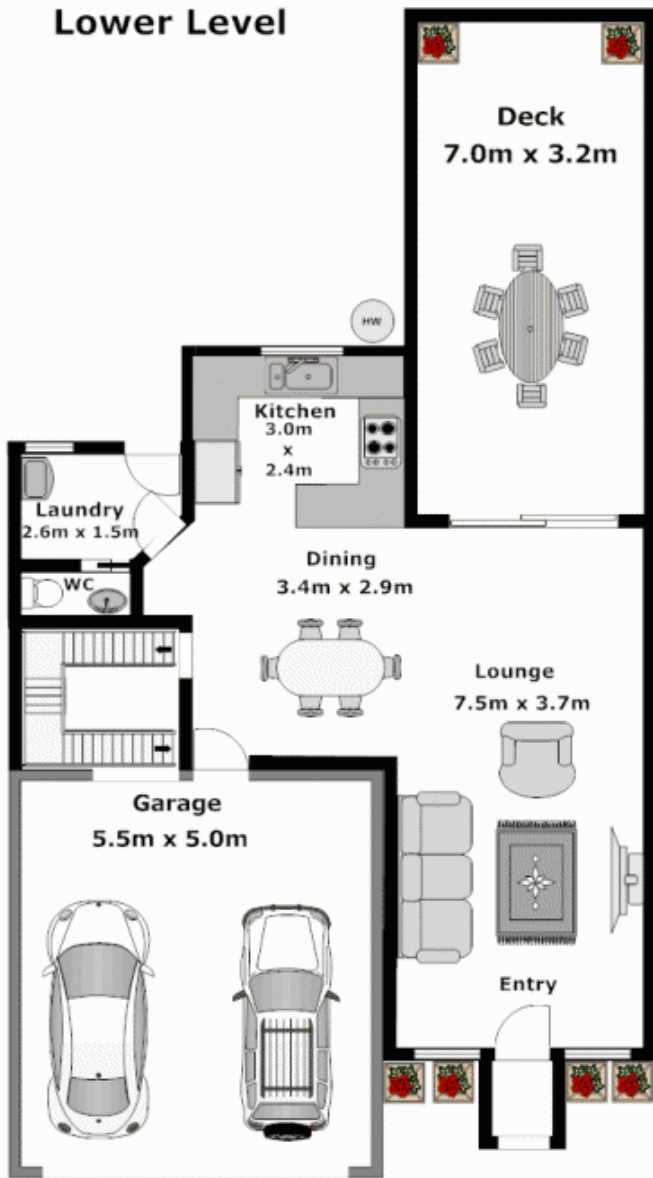
**View** : <https://www.gilmour.com.au/sale/nsw/parramatta/northmead/residential/townhouse/5619961>



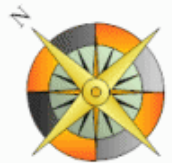
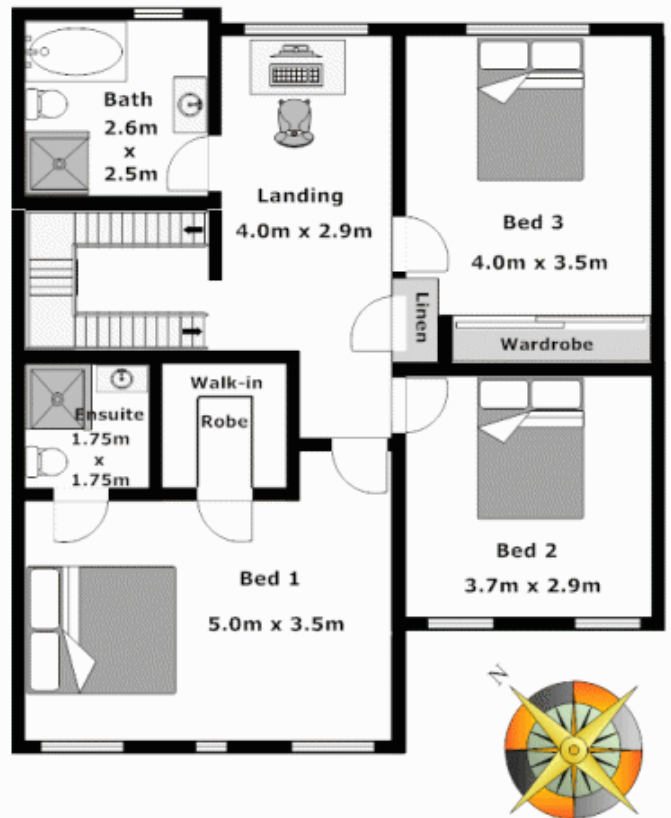
**Gilmour Property Agents**  
**02 9899 3311**

[For full version visit the website](https://www.gilmour.com.au)

## Lower Level



## Upper Level



APPROXIMATE INTERNAL UPPER FLOOR AREA: 85m<sup>2</sup> (9 sq)  
APPROXIMATE INTERNAL LOWER FLOOR AREA: 93m<sup>2</sup> (10sq)  
APPROXIMATE GARAGE FLOOR AREA: 27.5m<sup>2</sup> (3sq)

APPROXIMATE TOTAL INTERNAL FLOOR AREA: 205.5m<sup>2</sup> (22sq)

### DISCLAIMER:

Whilst every attempt has been made to ensure the accuracy of the floor plan contained here, no responsibility is taken for any error, omission, or misstatement. This floor plan is intended as a guide only, for representation purposes only, and should be used as such by any prospective purchaser. No guarantee or warranties can be given, and any person using this information should rely on their own enquiries.