



**TOONGABBIE**

3 2 3

Modern free standing family home is the ideal property for first home buyers and astute investors. Offering three bedrooms, one with built-in wardrobe, second with walk-in robe and master bedroom with ensuite & walk-in wardrobe and a total of two bathrooms (including ensuite) plus additional separate toilet. With light filled open plan living areas including tiled meals area off modern kitchen. Double lock-up garage plus additional car space and walking distance to Metella Road Primary School & park.

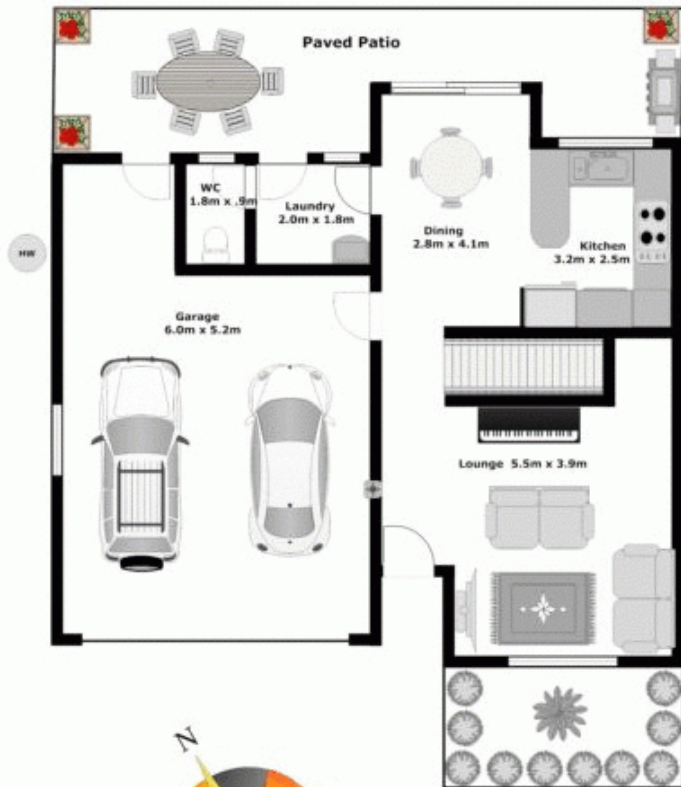
**Type** : House

**View** : <https://www.gilmour.com.au/sale/nsw/western-sydney/toongabbie/residential/house/5619898>



Contact: Stephen Kim, 0402 851 925

**Gilmour Property Agents**  
**02 9899 3311**



**APPROXIMATE INTERNAL GROUND FLOOR AREA: 54.1m<sup>2</sup> (6sq)**  
**APPROXIMATE INTERNAL UPPER LEVEL FLOOR AREA: 98.9m<sup>2</sup> (11sq)**  
**APPROXIMATE GARAGE FLOOR AREA: 31m<sup>2</sup> (3sq)**

**APPROXIMATE TOTAL INTERNAL FLOOR AREA: 184m<sup>2</sup> (19sq)**

**DISCLAIMER:**

Whilst every attempt has been made to ensure the accuracy of the floor plan contained here, no responsibility is taken for any error, omission, or misstatement. This floor plan is intended as a guide only, for representation purposes only, and should be used as such by any prospective purchaser. No guarantee or warranties can be given, and any person using this information should rely on their own enquiries.