




**54/18 Clarence Street LIDCOMBE NSW**

2  1  2 

Full brick two bedroom unit ideal for first home buyers or the astute investor. Located on the top floor of a well maintained secure complex with security camera and lighting. Featuring modern kitchen with gas cooking, balcony and lock up garage with additional car space. Walking distance to Lidcombe train station, bus stop, schools and shopping centre. With low strata rates this is a great opportunity for investment!

**Type** : Unit

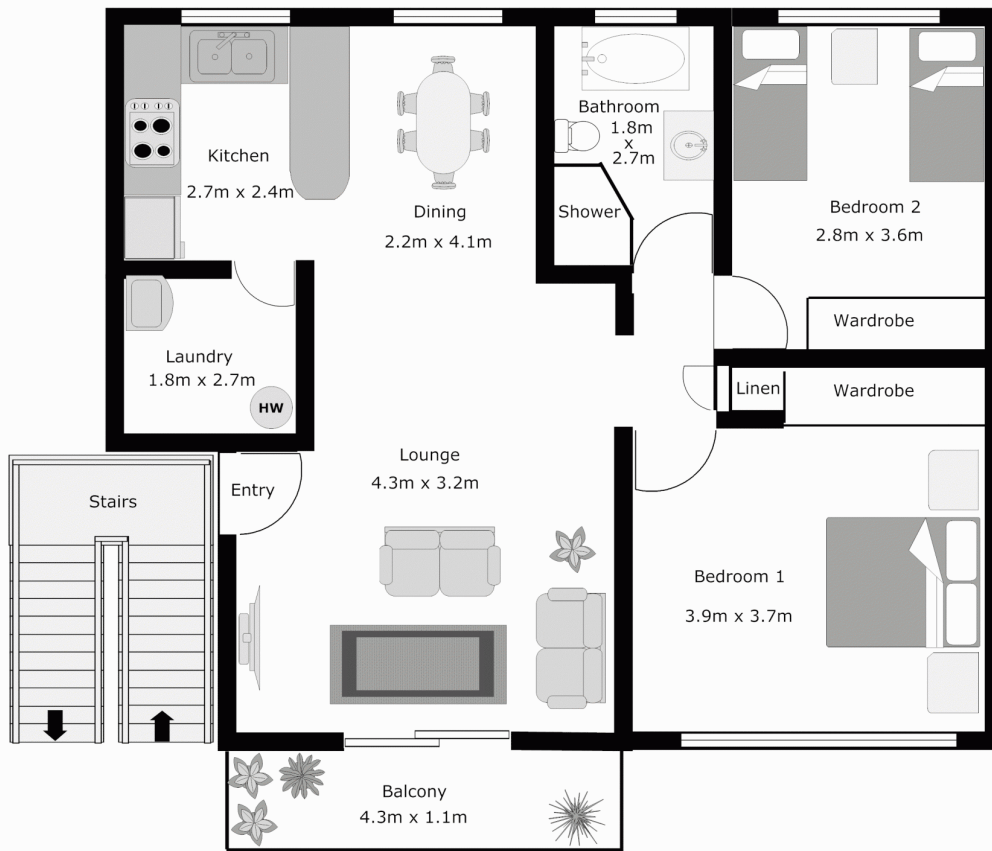
**View** : <https://www.gilmour.com.au/sale/nsw/parramatta/lidcombe/residential/unit/5619874>

Contact: Stephen Kim, 0402 851 925  
Sold 7th May, 2010

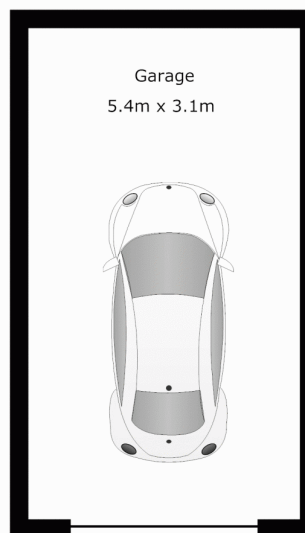


**Gilmour Property Agents**  
**02 9899 3311**

# 54/18 Clarence Street, Lidcombe



APPROX GARAGE FLOOR AREA: 16.74m<sup>2</sup> (1.8sq)



APPROX INTERNAL FLOOR AREA: 68.64m<sup>2</sup> (7.4sq)

## DISCLAIMER:

Whilst every attempt has been made to ensure the accuracy of the floor plan contained here, no responsibility is taken for any error, omission, or misstatement. This floor plan is intended as a guide only, for representation purposes only, and should be used as such by any prospective purchaser. No guarantee or warranties can be given, and any person using this information should rely on their own enquires.

