

GUILDFORD

3  1  1 

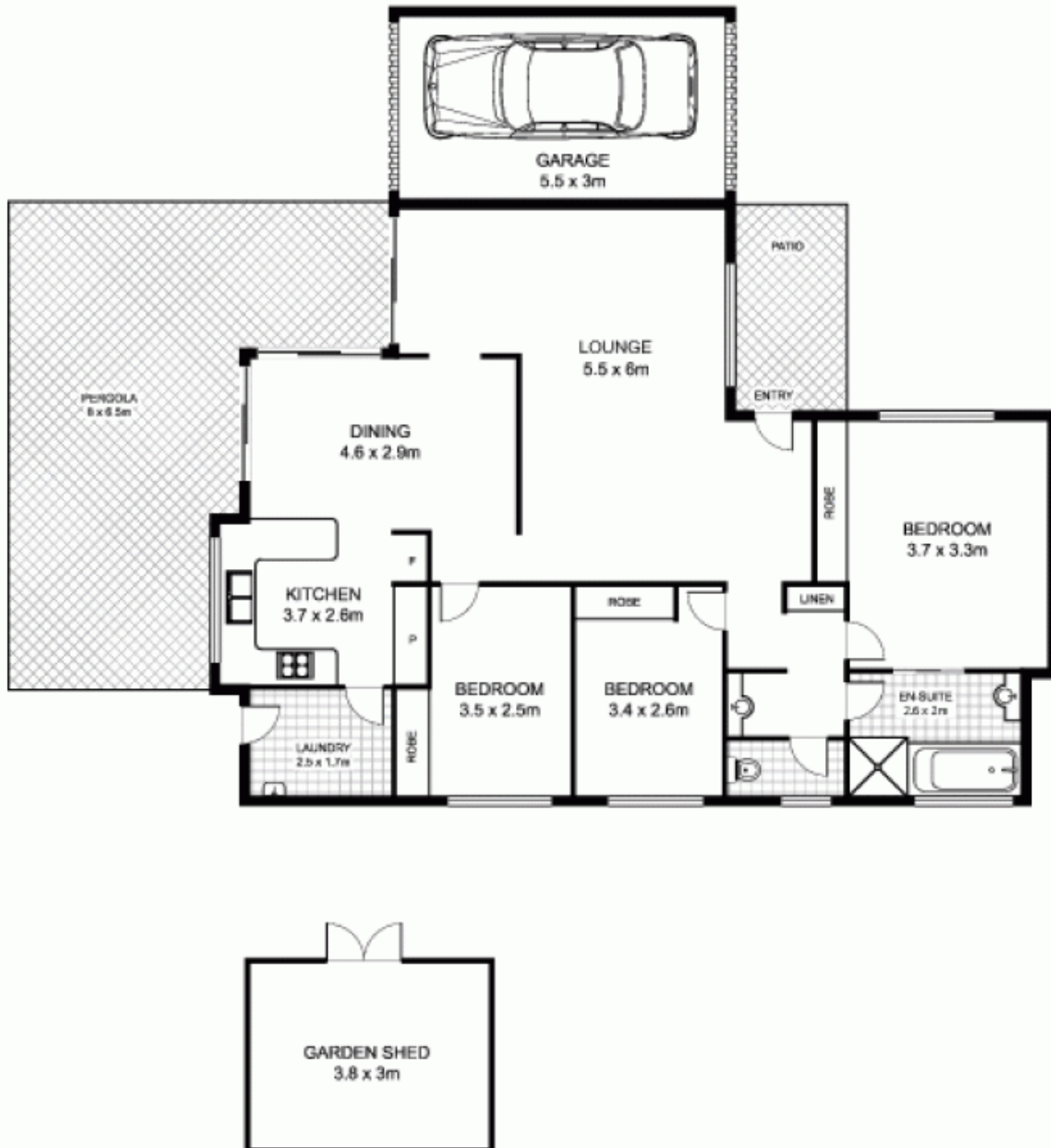
MIXED USE 10 ZONE. Ideal property for the first home buyer, investor or developer. Three bedrooms with built-in wardrobes to all bedrooms, split air conditioning system & auto single garage. Gas cooking to the kitchen, level backyard with pergola.

Type : House
Land Size : 737 sqm
View : <https://www.gilmour.com.au/sale/nsw/parra-matta/guildford/residential/house/5619809>



Gilmour Property Agents
02 9899 3311

534 Woodville Road, GUILDFORD



This floor plan is intended as a guide only. Layout dimensions are approximate only. No representations or warranties of any nature whatsoever are given or intended. Any person using this information should rely on their own enquiries