



## 1 Government Farm Crescent CASTLE HILL NSW

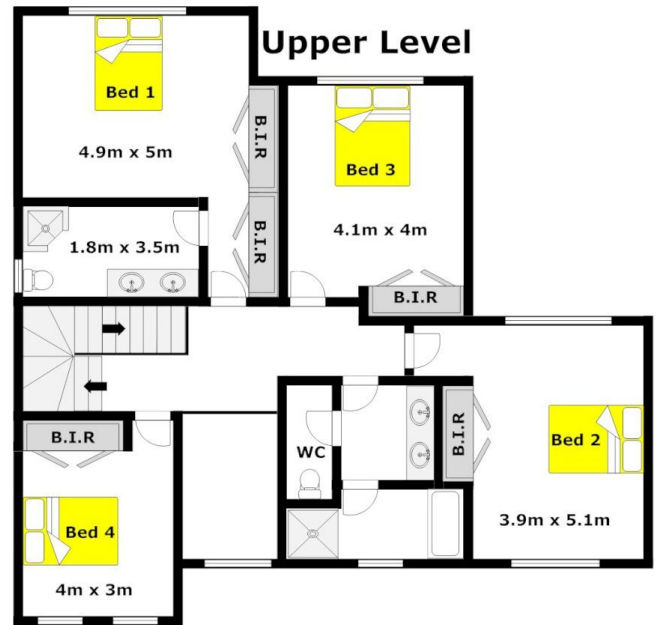
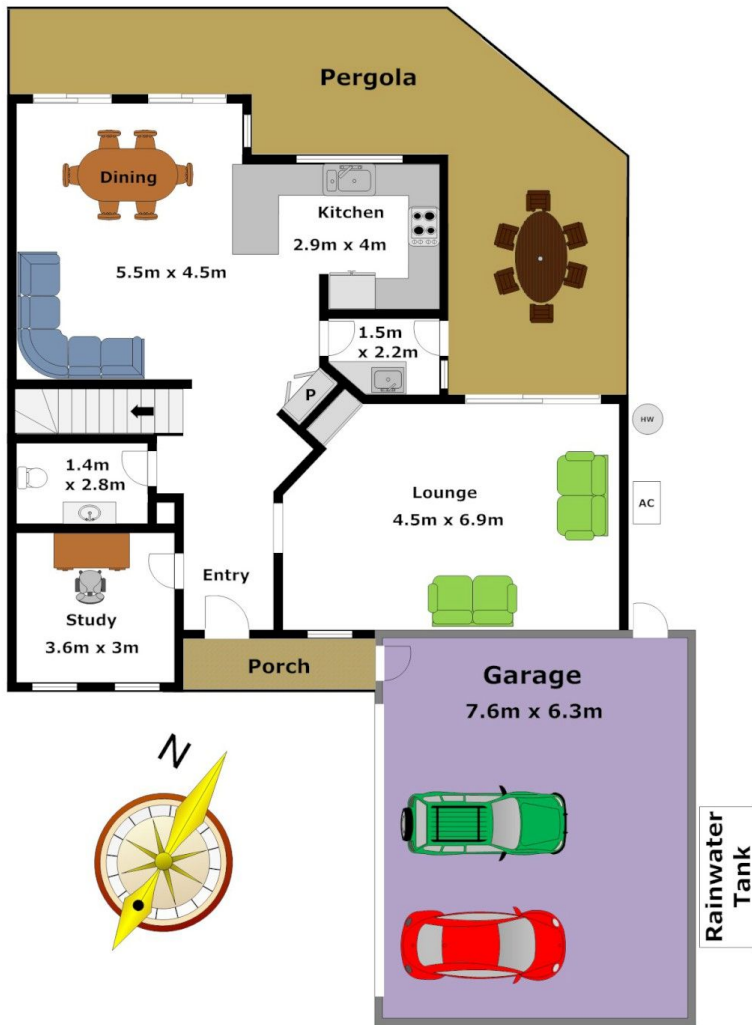
4  2  2 

Simply the Best is the only way to describe the location and position of this quality built, executive home in the popular Heritage Mews Estate. Situated on 538sqm and combined with the perfect, sunny north aspect to the back yard it is an ideal setting for enjoying the views over Heritage Park. This home offers 33 squares of contemporary, open living and four large bedrooms with built-in robes to all and there is two bathrooms including the en-suite with his and hers sinks to the master suite. The lower level is completed by a generous formal lounge room, a separate study and an open plan family/dining area adjoining the granite and timber gourmet kitchen with gas cooking. Continue out to the paved and motorised entertaining pergola that looks out to the grassed yard that is framed by established gardens and hedges. Finishing off the great inclusions of the property is the ducted air-conditioning, an automatic double lock-up garage, an additional separate toilet, a dishwasher,

**View :** <https://www.gilmour.com.au/lease/nsw/hills/castle-hill/residential/house/5619198>



**Gilmour Property Agents**  
**02 9899 3311**



**DISCLAIMER:**

Whilst every attempt has been made to ensure the accuracy of the floor plan contained here, no responsibility is taken for any error, omission, or misstatement. This floor plan is intended as a guide only, for representation purposes only, and should be used as such by any prospective purchaser. No guarantee or warranties can be given, and any person using this information should rely on their own enquiries.